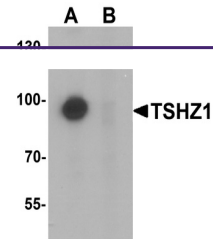

Product Datasheet

TSHZ1 Antibody (orb1238660)

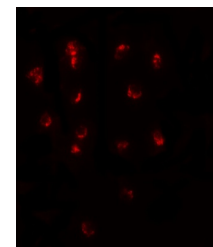
Description	TSHZ1 Antibody
Species/Host	Rabbit
Reactivity	Human, Mouse, Rat
Conjugation	Unconjugated
Tested Applications	ELISA, ICC, IF, WB
Immunogen	TSHZ1 antibody was raised against a 16 amino acid synthetic peptide near the amino terminus of human TSHZ1. The immunogen is located within amino acids 70 - 120 of TSHZ1.
Target	TSHZ1
Preservatives	TSHZ1 Antibody is supplied in PBS containing 0.02% sodium azide.
Form/Appearance	Liquid
Concentration	1 mg/mL
Storage	TSHZ1 antibody can be stored at 4°C for three months and -20°C, stable for up to one year. As with all antibodies care should be taken to avoid repeated freeze thaw cycles. Antibodies should not be exposed to prolonged high temperatures.
Note	For research use only
Application notes	TSHZ1 antibody can be used for detection of TSHZ1 by Western blot at 1 µg/mL. Antibody can also be used for immunocytochemistry starting at 2.5 µg/mL. For immunofluorescence start at 2.5 µg/mL. Antibody validated: Western Blot in mouse samples; Immunocytochemistry in mouse samples and Immunofluorescence in mouse samples. All other applications and species not yet tested.
Isotype	IgG
Clonality	Polyclonal
Uniprot ID	Q6ZSZ6
NCBI	NP_005777
Dilution Range	TSHZ1 antibody can be used for detection of TSHZ1 by Western blot at 1 µg/mL. Antibody can also be used for immunocytochemistry starting at 2.5 µg/mL. For immunofluorescence start at 2.5 µg/mL. Antibody validated: Western Blot in mouse samples; Immunocytochemistry in mouse samples and



Western blot analysis of TSHZ1 in A-20 c...



Immunocytochemistry of TSHZ1 in A20 cell...



Immunofluorescence of TSHZ1 in A20 cells...