
Product Datasheet

SNCA Antibody (orb1238657)

Description

SNCA Antibody

Species/Host

Rabbit

Reactivity

Human, Mouse, Rat

Conjugation

Unconjugated

Tested

ELISA, IF, IHC-P, WB

Applications
Immunogen

SNCA antibody was raised against a 19 amino acid peptide near the carboxy terminus of human SNCA. The immunogen is located within the last 50 amino acids of SNCA.

Target

SNCA

Preservatives

SNCA antibody is supplied in PBS containing 0.02% sodium azide.

Form/Appearance

Liquid

Concentration

1 mg/mL

Storage

SNCA antibody can be stored at 4°C for three months and -20°C, stable for up to one year.

Note

For research use only

Application notes

SNCA antibody can be used for detection of SNCA by Western blot at 1 - 2 µg/ml. Antibody can also be used for Immunohistochemistry starting at 5 µg/mL. For immunofluorescence start at 20 µg/mL. Antibody validated: Western Blot in human and mouse samples; Immunohistochemistry in rat samples and Immunofluorescence in rat samples. All other applications and species not yet tested.

Isotype

IgG

Clonality

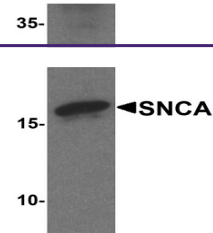
Polyclonal

MW

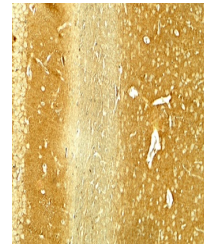
Predicted: 12 kDa Observed: 16 kDa

Uniprot ID
[P37840](#)
NCBI
[NP_000336](#)
Dilution Range

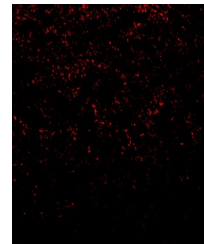
SNCA antibody can be used for detection of SNCA by Western blot at 1 - 2 µg/ml. Antibody can also be used for Immunohistochemistry starting at 5 µg/mL. For immunofluorescence start at 20 µg/mL. Antibody validated: Western Blot in human and mouse samples; Immunohistochemistry in rat samples and Immunofluorescence in rat samples. All other applications and species not yet tested.



Western blot analysis of SNCA in mouse c...



Immunohistochemistry of SNCA in rat brai...



Immunofluorescence of SNCA in rat brain ...