
Product Datasheet

Crlf2 Antibody (orb1238654)

Description

Crf2 Antibody

Species/Host

Rabbit

Reactivity

Mouse

Conjugation

Unconjugated

Tested

ELISA, IF, WB

Applications
Immunogen

TSLP receptor antibody was raised against a 21 amino acid synthetic peptide from near the center of mouse TSLP receptor. The immunogen is located within amino acids 140 - 190 of TSLP Receptor.

Target

Crf2

Preservatives

TSLP Receptor Antibody is supplied in PBS containing 0.02% sodium azide.

Form/Appearance

Liquid

Concentration

1 mg/mL

Storage

TSLP Receptor antibody can be stored at 4°C for three months and -20°C, stable for up to one year. As with all antibodies care should be taken to avoid repeated freeze thaw cycles. Antibodies should not be exposed to prolonged high temperatures.

Note

For research use only

Application notes

TSLP receptor antibody can be used for detection of TSLP receptor by Western blot at 1 µg/mL. For immunofluorescence start at 20 µg/mL. Antibody validated: Western Blot in mouse samples and Immunofluorescence in mouse samples. All other applications and species not yet tested.

Isotype

IgG

Clonality

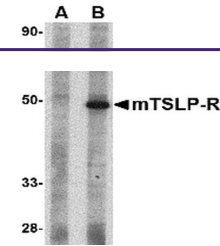
Polyclonal

Uniprot ID
[Q8CII9](#)
NCBI
[NP_057924](#)
Dilution Range

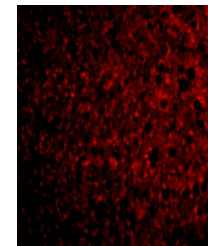
TSLP receptor antibody can be used for detection of TSLP receptor by Western blot at 1 µg/mL. For immunofluorescence start at 20 µg/mL. Antibody validated: Western Blot in mouse samples and Immunofluorescence in mouse samples. All other applications and species not yet tested.

Expiration Date

12 months from date of receipt.



Western blot analysis of TSLP Receptor i...



Immunofluorescence of TSLP Receptor in M...