

---

## Product Datasheet

### Crlf2 Antibody (orb1238653)

**Description**

Crlf2 Antibody

**Species/Host**

Rabbit

**Reactivity**

Human

**Conjugation**

Unconjugated

**Tested**

ELISA, IF, IHC-P, WB

**Applications**
**Immunogen**

TSLP Receptor antibody was raised against a 19 amino acid synthetic peptide from near the center of human TSLP receptor. The immunogen is located within amino acids 140 - 190 of TSLP Receptor.

**Target**

Crlf2

**Preservatives**

TSLP Receptor Antibody is supplied in PBS containing 0.02% sodium azide.

**Form/Appearance**

Liquid

**Concentration**

1 mg/mL

**Storage**

TSLP Receptor antibody can be stored at 4°C for three months and -20°C, stable for up to one year. As with all antibodies care should be taken to avoid repeated freeze thaw cycles. Antibodies should not be exposed to prolonged high temperatures.

**Note**

For research use only

**Application notes**

TSLP-R antibody can be used for detection of TSLP-R by Western blot at 0.5 - 1 µg/mL. Antibody can also be used for immunohistochemistry starting at 5 µg/mL. For immunofluorescence start at 20 µg/mL. Antibody validated: Western Blot in human samples; Immunohistochemistry in human samples and Immunofluorescence in human samples. All other applications and species not yet tested.

**Isotype**

IgG

**Clonality**

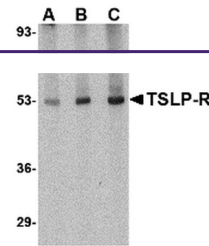
Polyclonal

**MW**

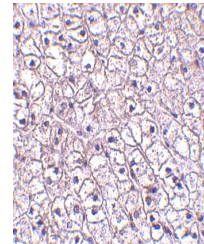
Predicted: 28, 41 kDa Observed: 53 kDa

**Uniprot ID**
[Q8CII9](#)
**NCBI**
[NP\\_071431](#)
**Dilution Range**

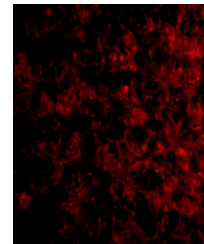
TSLP-R antibody can be used for detection of TSLP-R by Western blot at 0.5 - 1 µg/mL. Antibody can also be used for immunohistochemistry starting at 5 µg/mL. For immunofluorescence start at 20 µg/mL. Antibody validated: Western Blot in human



Western blot analysis of TSLP Receptor i...



Immunohistochemistry of TSLP-R in human ...



Immunofluorescence of TSLP Receptor in H...