
Product Datasheet

GID8 Antibody (orb1238647)

Description

GID8 Antibody

Species/Host

Rabbit

Reactivity

Human, Mouse, Rat

Conjugation

Unconjugated

Tested Applications

ELISA, IF, IHC-P, WB

Immunogen

TWA1 antibody was raised against a 17 amino acid synthetic peptide near the carboxy terminus of human TWA1. The immunogen is located within the last 50 amino acids of TWA1.

Target

GID8

Preservatives

TWA1 Antibody is supplied in PBS containing 0.02% sodium azide.

Form/Appearance

Liquid

Concentration

1 mg/mL

Storage

TWA1 antibody can be stored at 4°C for three months and -20°C, stable for up to one year. As with all antibodies care should be taken to avoid repeated freeze thaw cycles. Antibodies should not be exposed to prolonged high temperatures.

Note

For research use only

Application notes

TWA1 antibody can be used for detection of TWA1 by Western blot at 1 µg/mL. Antibody can also be used for immunohistochemistry starting at 2.5 µg/mL. For immunofluorescence start at 20 µg/mL. Antibody validated: Western Blot in human samples; Immunohistochemistry in rat samples and Immunofluorescence in rat samples. All other applications and species not yet tested.

Isotype

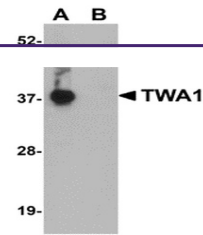
IgG

Clonality

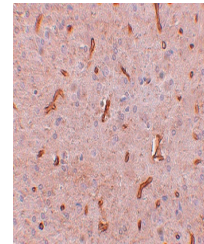
Polyclonal

Uniprot ID
[Q9NWU2](#)
NCBI
[NP_060366](#)
Dilution Range

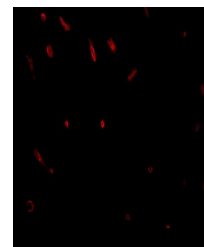
TWA1 antibody can be used for detection of TWA1 by Western blot at 1 µg/mL. Antibody can also be used for immunohistochemistry starting at 2.5 µg/mL. For immunofluorescence start at 20 µg/mL. Antibody validated: Western Blot in human samples; Immunohistochemistry in rat samples and



Western blot analysis of TWA1 in human b...



Immunohistochemistry of TWA1 in rat brai...



Immunofluorescence of TWA1 in rat brain ...