
Product Datasheet

TLR4 Antibody (orb1238646)

Description

TLR4 Antibody

Species/Host

Rabbit

Conjugation

Unconjugated

Tested Applications

ELISA, ICC, IF, IHC-P, WB

Immunogen

TLR4 antibody was raised against a peptide corresponding to 15 amino acids near the amino-terminus of human TLR4. The immunogen is located within amino acids 30 - 80 of TLR4.

Target

TLR4

Preservatives

TLR4 Antibody is supplied in PBS containing 0.02% sodium azide.

Form/Appearance

Liquid

Concentration

1 mg/mL

Storage

TLR4 antibody can be stored at 4°C for three months and -20°C, stable for up to one year. As with all antibodies care should be taken to avoid repeated freeze thaw cycles. Antibodies should not be exposed to prolonged high temperatures.

Note

For research use only

Application notes

TLR4 antibody can be used for detection of TLR4 by Western blot at 2 to 4 µg/mL. Antibody can also be used for immunocytochemistry starting at 2 µg/mL and Immunohistochemistry starting at 2.5 µg/mL. For immunofluorescence start at 20 µg/mL. Antibody validated: Western Blot in human samples; Immunohistochemistry in human samples; Immunocytochemistry in human samples and Immunofluorescence in human samples. All other applications and species not yet tested.

Isotype

IgG

Clonality

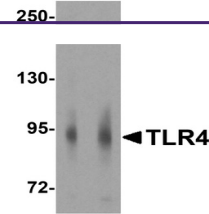
Polyclonal

MW

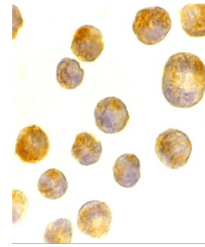
Predicted: 92 kDa Observed: 94 kDa

Uniprot ID
[O00206](#)
NCBI
[NP_612564](#)
Dilution Range

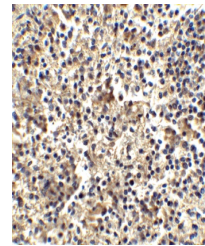
TLR4 antibody can be used for detection of TLR4 by Western blot at 2 to 4 µg/mL. Antibody can also be used for immunocytochemistry starting at 2 µg/mL and Immunohistochemistry starting at 2.5 µg/mL. For

A B


Western blot analysis of TLR4 in human s...



Immunocytochemistry of TLR4 in K562 cell...



Immunohistochemistry of TLR4 in human sp...