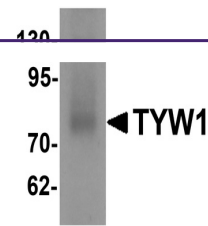
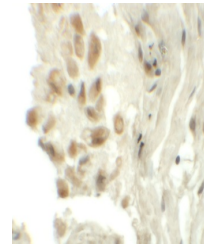

Product Datasheet

TYW1 Antibody (orb1238643)

Description	TYW1 Antibody
Species/Host	Rabbit
Reactivity	Human, Rat
Conjugation	Unconjugated
Tested Applications	ELISA, IHC-P, WB
Immunogen	TYW1 antibody was raised against a 19 amino acid synthetic peptide near the carboxy terminus of human TYW1. The immunogen is located within amino acids 520 - 570 of TYW1.
Target	TYW1
Preservatives	TYW1 Antibody is supplied in PBS containing 0.02% sodium azide.
Form/Appearance	Liquid
Concentration	1 mg/mL
Storage	TYW1 antibody can be stored at 4 °C, stable for one year. As with all antibodies care should be taken to avoid repeated freeze thaw cycles. Antibodies should not be exposed to prolonged high temperatures.
Note	For research use only
Application notes	TYW1 antibody can be used for detection of TYW1 by Western blot at 1 µg/mL. Antibody can also be used for immunohistochemistry starting at 5 µg/mL. Antibody validated: Western Blot in human samples and Immunohistochemistry in human samples. All other applications and species not yet tested.
Isotype	IgG
Clonality	Polyclonal
Uniprot ID	Q9NV66
NCBI	NP_060734
Dilution Range	TYW1 antibody can be used for detection of TYW1 by Western blot at 1 µg/mL. Antibody can also be used for immunohistochemistry starting at 5 µg/mL. Antibody validated: Western Blot in human samples and Immunohistochemistry in human samples. All other applications and species not yet tested.
Expiration Date	12 months from date of receipt



Western blot analysis of TYW1 in human I...



Immunohistochemistry of TYW1 in human lu...