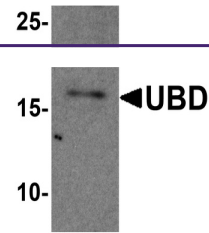
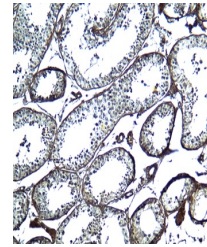

Product Datasheet

UBD Antibody (orb1238638)

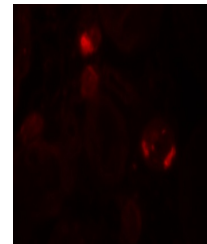
Description	UBD Antibody
Species/Host	Rabbit
Reactivity	Human
Conjugation	Unconjugated
Tested Applications	ELISA, IF, IHC-P, WB
Immunogen	UBD antibody was raised against a 16 amino acid peptide near the center of human UBD. The immunogen is located within amino acids 80 - 130 of UBD.
Target	UBD
Preservatives	UBD antibody is supplied in PBS containing 0.02% sodium azide.
Form/Appearance	Liquid
Concentration	1 mg/mL
Storage	UBD antibody can be stored at 4°C for three months and -20°C, stable for up to one year.
Note	For research use only
Application notes	UBD antibody can be used for detection of UBD by Western blot at 1 - 2 µg/mL. Antibody can also be used for immunohistochemistry starting at 5 µg/mL. For immunofluorescence start at 20 µg/mL. Antibody validated: Western Blot in human samples; Immunohistochemistry in human samples and Immunofluorescence in human samples. All other applications and species not yet tested.
Isotype	IgG
Clonality	Polyclonal
MW	Predicted: 18 kDa Observed: 17 kDa
Uniprot ID	O15205
NCBI	NP_006389
Dilution Range	UBD antibody can be used for detection of UBD by Western blot at 1 - 2 µg/mL. Antibody can also be used for immunohistochemistry starting at 5 µg/mL. For immunofluorescence start at 20 µg/mL. Antibody validated: Western Blot in human samples; Immunohistochemistry in human samples and Immunofluorescence in human samples. All other applications and species not yet tested.



Western blot analysis of UBD in human tes...



Immunohistochemistry of UBD in human tes...



Immunofluorescence of UBD in human testi...