
Product Datasheet

UHRF1BP1 Antibody (orb1238635)

Description

UHRF1BP1 Antibody

Species/Host

Rabbit

Reactivity

Human, Mouse

Conjugation

Unconjugated

Tested Applications

ELISA, IF, IHC-P, WB

Immunogen

UHRF1BP1 antibody was raised against a 17 amino acid synthetic peptide near the center of human UHRF1BP1. The immunogen is located within amino acids 890 - 940 of UHRF1BP1.

Target

UHRF1BP1

Preservatives

UHRF1BP1 Antibody is supplied in PBS containing 0.02% sodium azide.

Form/Appearance

Liquid

Concentration

1 mg/mL

Storage

UHRF1BP1 antibody can be stored at 4°C for three months and -20°C, stable for up to one year. As with all antibodies care should be taken to avoid repeated freeze thaw cycles. Antibodies should not be exposed to prolonged high temperatures.

Note

For research use only

Application notes

UHRF1BP1 antibody can be used for detection of UHRF1BP1 by Western blot at 1 - 2 µg/mL. Antibody can also be used for immunohistochemistry starting at 2.5 µg/mL. For immunofluorescence start at 20 µg/mL. Antibody validated: Western Blot in mouse samples; Immunohistochemistry in human samples and Immunofluorescence in human samples. All other applications and species not yet tested.

Isotype

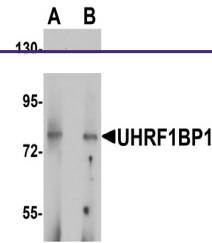
IgG

Clonality

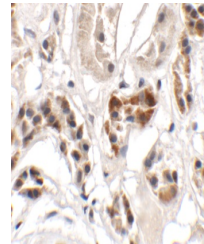
Polyclonal

Uniprot ID
[Q6BDS2](#)
NCBI
[NP_060224](#)
Dilution Range

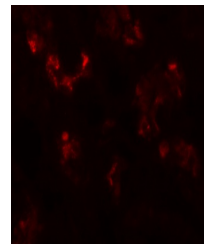
UHRF1BP1 antibody can be used for detection of UHRF1BP1 by Western blot at 1 - 2 µg/mL. Antibody can also be used for immunohistochemistry starting at 2.5 µg/mL. For immunofluorescence start at 20 µg/mL. Antibody validated: Western Blot in mouse samples; Immunohistochemistry in human samples



Western blot analysis of UHRF1BP1 in mou...



Immunohistochemistry of UHRF1BP1 in huma...



Immunofluorescence of UHRF1BP1 in human ...