
Product Datasheet

USP10 Antibody (orb1238624)

Description

USP10 Antibody

Species/Host

Rabbit

Reactivity

Human, Mouse

Conjugation

Unconjugated

Tested Applications

ELISA, ICC, IF, WB

Immunogen

USP10 antibody was raised against a 16 amino acid synthetic peptide near the amino terminus of human USP10. The immunogen is located within amino acids 30 - 80 of USP10.

Target

USP10

Preservatives

USP10 Antibody is supplied in PBS containing 0.02% sodium azide.

Form/Appearance

Liquid

Concentration

1 mg/mL

Storage

USP10 antibody can be stored at 4°C for three months and -20°C, stable for up to one year. As with all antibodies care should be taken to avoid repeated freeze thaw cycles. Antibodies should not be exposed to prolonged high temperatures.

Note

For research use only

Application notes

USP10 antibody can be used for detection of USP10 by Western blot at 1 - 2 µg/mL. Antibody can also be used for immunocytochemistry starting at 20 µg/mL. For immunofluorescence start at 20 µg/mL. Antibody validated: Western Blot in human samples; Immunocytochemistry in human samples and Immunofluorescence in human samples. All other applications and species not yet tested.

Isotype

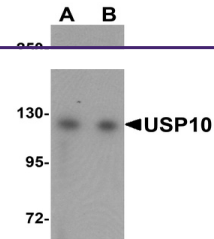
IgG

Clonality

Polyclonal

Uniprot ID
[Q14694](#)
NCBI
[NP_005144](#)
Dilution Range

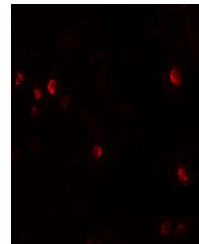
USP10 antibody can be used for detection of USP10 by Western blot at 1 - 2 µg/mL. Antibody can also be used for immunocytochemistry starting at 20 µg/mL. For immunofluorescence start at 20 µg/mL. Antibody validated: Western Blot in human samples; Immunocytochemistry in human samples and



Western blot analysis of USP10 in Jurkat...



Immunocytochemistry of USP10 in Jurkat c...



Immunofluorescence of USP10 in Jurkat ce...