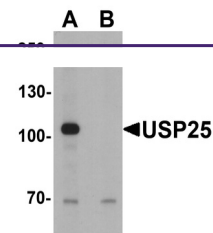
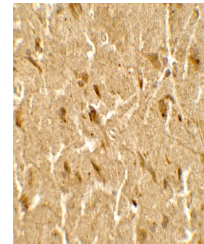

Product Datasheet

USP25 Antibody (orb1238623)

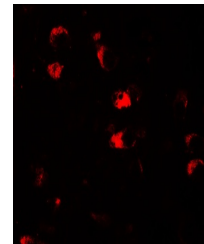
Description	USP25 Antibody
Species/Host	Rabbit
Reactivity	Human, Mouse
Conjugation	Unconjugated
Tested Applications	ELISA, IF, IHC-P, WB
Immunogen	USP25 antibody was raised against a 17 amino acid peptide near the center of human USP25. The immunogen is located within amino acids 470 - 520 of USP25.
Target	USP25
Preservatives	USP25 Antibody is supplied in PBS containing 0.02% sodium azide.
Form/Appearance	Liquid
Concentration	1 mg/mL
Storage	USP25 antibody can be stored at 4°C for three months and -20°C, stable for up to one year.
Note	For research use only
Application notes	USP25 antibody can be used for detection of USP25 by Western blot at 1 - 2 µg/ml. Antibody can also be used for Immunohistochemistry at 5 µg/mL. For Immunofluorescence start at 20 µg/mL. Antibody validated: Western Blot in mouse samples; Immunohistochemistry in human samples and Immunofluorescence in human samples. All other applications and species not yet tested.
Isotype	IgG
Clonality	Polyclonal
MW	Predicted: 116 kDa Observed: 105 kDa
Uniprot ID	Q9UHP3
NCBI	NP_037528
Dilution Range	USP25 antibody can be used for detection of USP25 by Western blot at 1 - 2 µg/ml. Antibody can also be used for Immunohistochemistry at 5 µg/mL. For Immunofluorescence start at 20 µg/mL. Antibody validated: Western Blot in mouse samples; Immunohistochemistry in human samples and Immunofluorescence in human samples. All other applications and species not yet tested.



Western blot analysis of USP25 in mouse ...



Immunohistochemistry of USP25 in human b...



Immunofluorescence of USP25 in human bra...