

---

## Product Datasheet

### TOLLIP Antibody (orb1238616)

**Description**

TOLLIP Antibody

**Species/Host**

Rabbit

**Reactivity**

Human, Mouse, Rat

**Conjugation**

Unconjugated

**Tested Applications**

ELISA, ICC, IF, IHC-P, WB

**Immunogen**

TOLLIP antibody was raised against a 16 amino acid synthetic peptide from near the carboxy terminus of human TOLLIP. The immunogen is located within the last 50 amino acids of TOLLIP.

**Target**

TOLLIP

**Preservatives**

TOLLIP Antibody is supplied in PBS containing 0.02% sodium azide.

**Form/Appearance**

Liquid

**Concentration**

1 mg/mL

**Storage**

TOLLIP antibody can be stored at 4°C for three months and -20°C, stable for up to one year. As with all antibodies care should be taken to avoid repeated freeze thaw cycles. Antibodies should not be exposed to prolonged high temperatures.

**Note**

For research use only

**Application notes**

TOLLIP antibody can be used for the detection of TOLLIP by Western blot at 1 - 2 µg/mL. Antibody can also be used for immunohistochemistry starting at 5 µg/mL and immunocytochemistry starting at 2 µg/mL. For immunofluorescence start at 20 µg/mL. Antibody validated: Western Blot in rat samples; Immunohistochemistry in human samples; Immunocytochemistry in human samples and Immunofluorescence in human samples. All other applications and species not yet tested.

**Isotype**

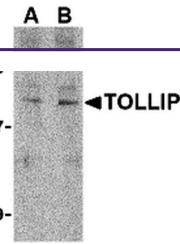
IgG

**Clonality**

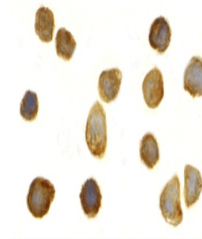
Polyclonal

**Uniprot ID**
[Q9H0E2](#)
**NCBI**
[AAH18272](#)
**Dilution Range**

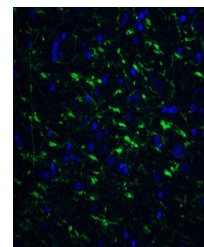
TOLLIP antibody can be used for the detection of TOLLIP by Western blot at 1 - 2 µg/mL. Antibody can also be used for immunohistochemistry starting at 5 µg/mL and immunocytochemistry starting at 2



Western blot analysis of TOLLIP in rat b...



Immunocytochemistry of TOLLIP in THP-1 c...



Immunofluorescence of TOLLIP in human br...