

## Product Datasheet

### MAVS Antibody (orb1238613)

**Description**

MAVS Antibody

**Species/Host**

Rabbit

**Reactivity**

Human, Mouse, Rat

**Conjugation**

Unconjugated

**Tested Applications**

ELISA, IF, IHC-P, WB

**Immunogen**

VISA antibody was raised against a 13 amino acid synthetic peptide from near the amino terminus of human VISA. The immunogen is located within the first 50 amino acids of VISA.

**Target**

MAVS

**Preservatives**

VISA Antibody is supplied in PBS containing 0.02% sodium azide.

**Form/Appearance**

Liquid

**Concentration**

1 mg/mL

**Storage**

VISA antibody can be stored at 4°C for three months and -20°C, stable for up to one year. As with all antibodies care should be taken to avoid repeated freeze thaw cycles. Antibodies should not be exposed to prolonged high temperatures.

**Note**

For research use only

**Application notes**

VISA antibody can be used for detection of VISA by Western blot at 0.5 - 2 µg/mL. Antibody can also be used for immunohistochemistry starting at 5 µg/mL. For immunofluorescence start at 20 µg/mL. Antibody validated: Western Blot in mouse samples; Immunohistochemistry in human samples and Immunofluorescence in human samples. All other applications and species not yet tested.

**Isotype**

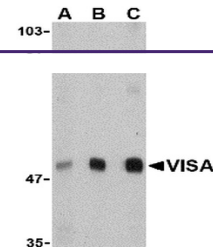
IgG

**Clonality**

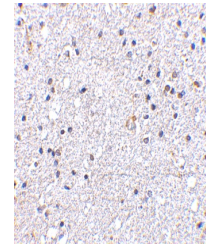
Polyclonal

**Uniprot ID**
[Q7Z434](#)
**NCBI**
[NP\\_065797](#)
**Dilution Range**

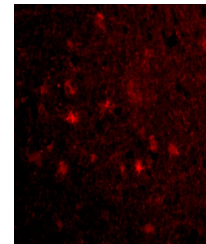
VISA antibody can be used for detection of VISA by Western blot at 0.5 - 2 µg/mL. Antibody can also be used for immunohistochemistry starting at 5 µg/mL. For immunofluorescence start at 20 µg/mL. Antibody validated: Western Blot in mouse samples; Immunohistochemistry in human samples and



Western blot analysis of VISA in A20 cel...



Immunohistochemistry of VISA in human br...



Immunofluorescence of VISA in Human Brai...