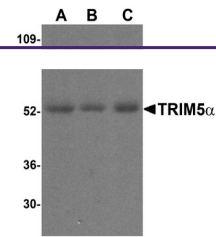
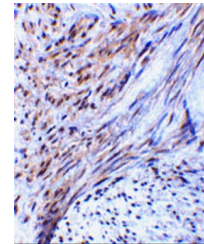

Product Datasheet

TRIM5 Antibody (orb1238608)

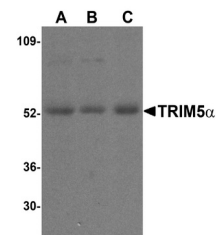
Description	TRIM5 Antibody
Species/Host	Rabbit
Reactivity	Human
Conjugation	Unconjugated
Tested Applications	ELISA, IHC-P, WB
Immunogen	TRIM5 alpha antibody was raised against a synthetic peptide corresponding to 19 amino acids near the center of rhesus monkey TRIM5 alpha. The immunogen is located within amino acids 390 - 440 of TRIM5 alpha.
Target	TRIM5
Preservatives	TRIM5 alpha Antibody is supplied in PBS containing 0.02% sodium azide.
Form/Appearance	Liquid
Concentration	1 mg/mL
Storage	TRIM5 alpha antibody can be stored at 4°C for three months and -20°C, stable for up to one year. As with all antibodies care should be taken to avoid repeated freeze thaw cycles. Antibodies should not be exposed to prolonged high temperatures.
Note	For research use only
Application notes	TRIM5 alpha antibody can be used for detection of TRIM5 alpha by Western blot at 2 µg/mL. Antibody can also be used for immunohistochemistry starting at 2 µg/mL. Antibody validated: Western Blot in human samples and Immunohistochemistry in human samples. All other applications and species not yet tested.
Isotype	IgG
Clonality	Polyclonal
MW	Predicted: 54 kDa Observed: 54 kDa
Uniprot ID	Q0PF16
NCBI	ABG67967
Dilution Range	TRIM5 alpha antibody can be used for detection of TRIM5 alpha by Western blot at 2 µg/mL. Antibody can also be used for immunohistochemistry starting at 2 µg/mL. Antibody validated: Western Blot in human samples and Immunohistochemistry in



Western blot analysis of TRIM5 alpha exp...



Immunohistochemistry of TRIM5 alpha in h...



Western blot analysis of TRIM5 alpha exp...