

## Product Datasheet

### TRPC6 Antibody (orb1238603)

**Description**

TRPC6 Antibody

**Species/Host**

Rabbit

**Reactivity**

Human, Mouse

**Conjugation**

Unconjugated

**Tested**

ELISA, IF, IHC-P, WB

**Applications**
**Immunogen**

TRPC6 antibody was raised against a 14 amino acid synthetic peptide from near the amino terminus of human TRPC6. The immunogen is located within amino acids 50 - 100 of TRPC6.

**Target**

TRPC6

**Preservatives**

TRPC6 Antibody is supplied in PBS containing 0.02% sodium azide.

**Form/Appearance**

Liquid

**Concentration**

1 mg/mL

**Storage**

TRPC6 antibody can be stored at 4°C for three months and -20°C, stable for up to one year. As with all antibodies care should be taken to avoid repeated freeze thaw cycles. Antibodies should not be exposed to prolonged high temperatures.

**Note**

For research use only

**Application notes**

TRPC6 antibody can be used for the detection of TRPC6 by Western blot at 0.5 - 1 µg/mL. Antibody can also be used for Immunohistochemistry starting at 10 µg/mL and Immunocytochemistry starting at 2 µg/mL. For immunofluorescence start at 5 µg/mL. Antibody validated: Western Blot in human samples; Immunohistochemistry in mouse samples; Immunocytochemistry in human samples and Immunofluorescence in human samples. All other applications and species not yet tested.

**Isotype**

IgG

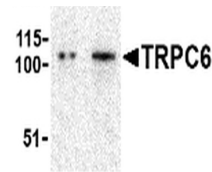
**Clonality**

Polyclonal

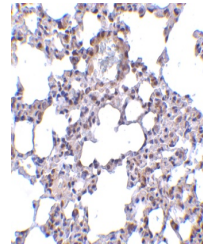
**Uniprot ID**
[Q9Y210](#)
**NCBI**
[AAH93658](#)
**Dilution Range**

TRPC6 antibody can be used for the detection of TRPC6 by Western blot at 0.5 - 1 µg/mL. Antibody can also be used for Immunohistochemistry starting at 10 µg/mL and Immunocytochemistry starting at 2

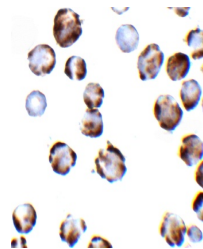
A B



Western blot analysis of TRPC6 in K562 c...



Immunohistochemistry of TRPC6 in mouse l...



Immunocytochemistry of TRPC6 in K562 ce...