
Product Datasheet

VTI1a Antibody (orb1238601)

Description

VT11a Antibody

Species/Host

Rabbit

Reactivity

Human, Mouse, Rat

Conjugation

Unconjugated

Tested

ELISA, IHC-P, WB

Applications
Immunogen

VT11a antibody was raised against a 19 amino acid peptide near the center of human VT11a. The immunogen is located within amino acids 50 - 100 of VT11a.

Target

VT11a

Preservatives

VT11a antibody is supplied in PBS containing 0.02% sodium azide.

Form/Appearance

Liquid

Concentration

1 mg/mL

Storage

VT11a antibody can be stored at 4°C for three months and -20°C, stable for up to one year.

Note

For research use only

Application notes

VT11a antibody can be used for detection of VT11a by Western blot at 1 - 2 µg/ml. Antibody can also be used for immunohistochemistry starting at 5 µg/mL. Antibody validated: Western Blot in human samples and Immunohistochemistry in human samples. All other applications and species not yet tested.

Isotype

IgG

Clonality

Polyclonal

MW

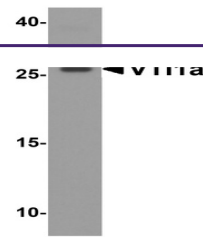
Predicted: 24, 27 kDa Observed: 26 kDa

Uniprot ID
[Q96AJ9](#)
NCBI
[NP_660207](#)
Dilution Range

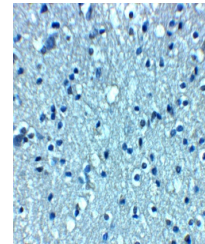
VT11a antibody can be used for detection of VT11a by Western blot at 1 - 2 µg/ml. Antibody can also be used for immunohistochemistry starting at 5 µg/mL. Antibody validated: Western Blot in human samples and Immunohistochemistry in human samples. All other applications and species not yet tested.

Expiration Date

12 months from date of receipt.



Western blot analysis of VT11a in human ...



Immunohistochemistry of VT11a in human b...