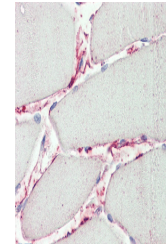


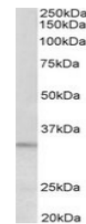
## Product Datasheet

### PI15 antibody (orb12386)

<b>Description</b>	Goat polyclonal to PI15.
<b>Species/Host</b>	Goat
<b>Reactivity</b>	Bovine, Canine, Human, Mouse, Porcine, Rat
<b>Conjugation</b>	Unconjugated
<b>Tested Applications</b>	ELISA, IHC, WB
<b>Target</b>	PI15 (aa128-141)
<b>Preservatives</b>	Supplied at 0.5 mg/ml in Tris saline, 0.02% sodium azide, pH 7.3 with 0.5% bovine serum albumin. Aliquot and store at -20°C. Minimize freezing and thawing.
<b>Storage</b>	Aliquot and store at -20°C. Minimize freezing and thawing.
<b>Note</b>	For research use only
<b>Application notes</b>	WB: Approx 33kDa band observed in lysates of cell line HeLa (calculated MW of 29.1kDa according to NP_056970.1). Recommended concentration: 0.3-1µg/ml. Preliminary testing was unsuccessful on Mouse and Rat Brain for this particular batch.. IHC: Paraffin embedded Human Skeletal Muscle. Recommended concentration: 5µg/ml.
<b>Protein Sequence</b>	RTGGRYSILQLVKP
<b>Clonality</b>	Polyclonal
<b>MW</b>	29.1
<b>Entrez</b>	<b>51050</b>
<b>Dilution Range</b>	ELISA: 1:1000, WB: 0.3-1 µg/ml, IHC-P: 5 µg/ml
<b>Expiration Date</b>	12 months from date of receipt.



orb12386  
(5µg/ml)  
staining of  
paraffin ...



orb12386  
(0.3µg/ml)  
staining of  
HeLa ly...