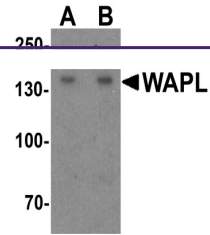
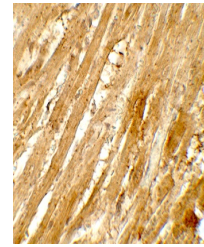

Product Datasheet

WAPAL Antibody (orb1238598)

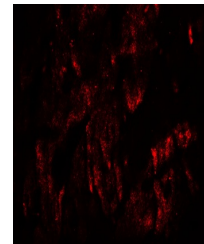
Description	WAPAL Antibody
Species/Host	Rabbit
Reactivity	Human, Mouse, Rat
Conjugation	Unconjugated
Tested Applications	ELISA, IF, IHC-P, WB
Immunogen	WAPL antibody was raised against an 18 amino acid peptide near the amino terminus of human WAPL. The immunogen is located within amino acids 30 - 80 of WAPL.
Target	WAPAL
Preservatives	WAPL antibody is supplied in PBS containing 0.02% sodium azide.
Form/Appearance	Liquid
Concentration	1 mg/mL
Storage	WAPL antibody can be stored at 4°C for three months and -20°C, stable for up to one year.
Note	For research use only
Application notes	WAPL antibody can be used for detection of WAPL by Western blot at 1 - 2 µg/ml. Antibody can also be used for Immunohistochemistry at 5 µg/mL. For Immunofluorescence start at 20 µg/mL. Antibody validated: Western Blot in mouse samples; Immunohistochemistry in rat samples and Immunofluorescence in rat samples. All other applications and species not yet tested.
Isotype	IgG
Clonality	Polyclonal
MW	Predicted: 131 kDa Observed: 140 kDa
Uniprot ID	Q7Z5K2
NCBI	NP_055860
Dilution Range	WAPL antibody can be used for detection of WAPL by Western blot at 1 - 2 µg/ml. Antibody can also be used for Immunohistochemistry at 5 µg/mL. For Immunofluorescence start at 20 µg/mL. Antibody validated: Western Blot in mouse samples; Immunohistochemistry in rat samples and Immunofluorescence in rat samples. All other applications and species not yet tested.



Western blot analysis of WAPL in A20 cel...



Immunohistochemistry of WAPL in rat hear...



Immunofluorescence of WAPL in rat heart ...