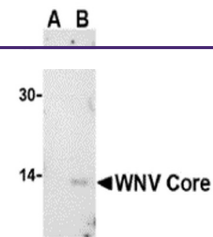
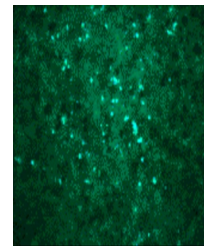

Product Datasheet

WNVgp1 Antibody (orb1238593)

Description	WNVgp1 Antibody
Species/Host	Rabbit
Reactivity	Virus
Conjugation	Unconjugated
Tested Applications	ELISA, ICC, WB
Immunogen	West Nile Virus Core antibody was raised against a synthetic peptide corresponding to 15 amino acids near the carboxy terminus of the West Nile Virus core protein. The immunogen is located within amino acids 80 - 130 of West Nile Virus Core.
Target	WNVgp1
Preservatives	West Nile Virus Core Antibody is supplied in PBS containing 0.02% sodium azide.
Form/Appearance	Liquid
Concentration	1 mg/mL
Storage	West Nile Virus Core antibody can be stored at 4°C for three months and -20°C, stable for up to one year. As with all antibodies care should be taken to avoid repeated freeze thaw cycles. Antibodies should not be exposed to prolonged high temperatures.
Note	For research use only
Application notes	West Nile virus Core antibody can be used for the detection of the WNV Core protein in ELISA. It will detect 10 ng of free peptide at 1 µg/mL. This antibody will also detect the protein in immunoblot at 1 µg/mL. Antibody can also be used for immunocytochemistry starting at 20 µg/mL. Antibody validated: Western Blot in human samples and Immunocytochemistry in monkey samples. All other applications and species not yet tested.
Isotype	IgG
Clonality	Polyclonal
Uniprot ID	P06935
NCBI	NP_776011
Dilution Range	West Nile virus Core antibody can be used for the detection of the WNV Core protein in ELISA. It will detect 10 ng of free peptide at 1 µg/mL. This antibody will also detect the protein in immunoblot



Western blot analysis of WNV Core in (A)...



Immunocytochemical staining of transfected...