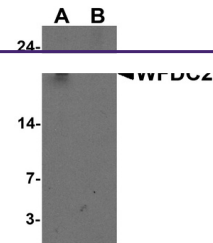


---

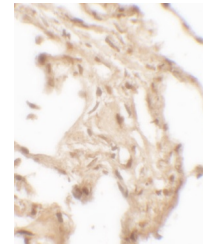
## Product Datasheet

### WFDC2 Antibody (orb1238592)

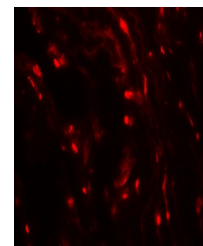
<b>Description</b>	WFDC2 Antibody
<b>Species/Host</b>	Rabbit
<b>Reactivity</b>	Human
<b>Conjugation</b>	Unconjugated
<b>Tested Applications</b>	ELISA, IF, IHC-P, WB
<b>Immunogen</b>	WFDC2 antibody was raised against a 16 amino acid peptide near the amino terminus of human WFDC2. The immunogen is located within the first 50 amino acids of WFDC2 .
<b>Target</b>	WFDC2
<b>Preservatives</b>	WFDC2 Antibody is supplied in PBS containing 0.02% sodium azide.
<b>Form/Appearance</b>	Liquid
<b>Concentration</b>	1 mg/mL
<b>Storage</b>	WFDC2 antibody can be stored at 4°C for three months and -20°C, stable for up to one year.
<b>Note</b>	For research use only
<b>Application notes</b>	WFDC2 antibody can be used for detection of WFDC2 by Western blot at 1 - 2 µg/ml. Antibody validated: Western Blot in human samples; Immunohistochemistry in human samples and Immunofluorescence in human samples. All other applications and species not yet tested.
<b>Isotype</b>	IgG
<b>Clonality</b>	Polyclonal
<b>MW</b>	Predicted: 14 kDa Observed: 20kDa
<b>Uniprot ID</b>	<a href="#">Q14508</a>
<b>NCBI</b>	<a href="#">NP_006094</a>
<b>Dilution Range</b>	WFDC2 antibody can be used for detection of WFDC2 by Western blot at 1 - 2 µg/ml. Antibody validated: Western Blot in human samples; Immunohistochemistry in human samples and Immunofluorescence in human samples. All other applications and species not yet tested.
<b>Expiration Date</b>	12 months from date of receipt.



Western blot analysis of WFDC2 in A549 c...



Immunohistochemistry of WFDC2 in human lun...



Immunofluorescence of WFDC2 in human lun...