
Product Datasheet

UBE2N Antibody (orb1238589)

Description

UBE2N Antibody

Species/Host

Rabbit

Conjugation

Unconjugated

Tested Applications

ELISA, IF, IHC-P, WB

Immunogen

UBE2N antibody was raised against a peptide corresponding to 15 amino acids near the C-terminus of human UBE2N. The immunogen is located within the last 50 amino acids of UBE2N.

Target

UBE2N

Preservatives

UBE2N Antibody is supplied in PBS containing 0.02% sodium azide.

Form/Appearance

Liquid

Concentration

1 mg/mL

Storage

UBE2N antibody can be stored at 4°C for three months and -20°C, stable for up to one year. As with all antibodies care should be taken to avoid repeated freeze thaw cycles. Antibodies should not be exposed to prolonged high temperatures.

Note

For research use only

Application notes

UBE2N antibody can be used for detection of UBE2N by Western blot at 0.5 to 2 µg/mL. Antibody can also be used for immunohistochemistry starting at 2.5 µg/mL. For immunofluorescence start at 10 µg/mL. Antibody validated: Western Blot in human samples; Immunohistochemistry in mouse samples and Immunofluorescence in mouse samples. All other applications and species not yet tested.

Isotype

IgG

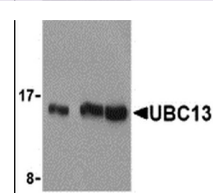
Clonality

Polyclonal

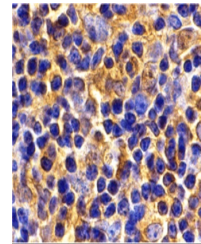
Uniprot ID
P61088
NCBI
AAP35519
Dilution Range

UBE2N antibody can be used for detection of UBE2N by Western blot at 0.5 to 2 µg/mL. Antibody can also be used for immunohistochemistry starting at 2.5 µg/mL. For immunofluorescence start at 10 µg/mL. Antibody validated: Western Blot in human samples; Immunohistochemistry in mouse samples and Immunofluorescence in mouse samples. All other applications and species not yet tested.

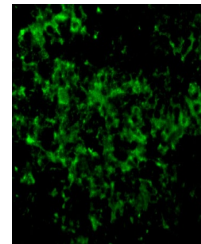
A B C



Western blot analysis of UBC13 in human ...



Immunohistochemistry of UBC13 in mouse t...



Immunofluorescence of UBC13 in Mouse Thy...