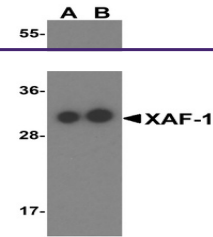


---

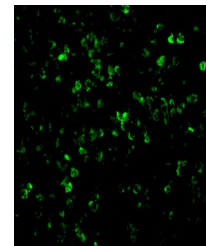
## Product Datasheet

### XAF1 Antibody (orb1238584)

<b>Description</b>	XAF1 Antibody
<b>Species/Host</b>	Rabbit
<b>Reactivity</b>	Human
<b>Conjugation</b>	Unconjugated
<b>Tested Applications</b>	ELISA, IF, WB
<b>Immunogen</b>	XAF-1 antibody was raised against a synthetic peptide corresponding to 16 amino acids near the middle of human XAF-1. The immunogen is located within amino acids 230 - 280 of XAF-1.
<b>Target</b>	XAF1
<b>Preservatives</b>	XAF-1 Antibody is supplied in PBS containing 0.02% sodium azide.
<b>Form/Appearance</b>	Liquid
<b>Concentration</b>	1 mg/mL
<b>Storage</b>	XAF-1 antibody can be stored at 4°C for three months and -20°C, stable for up to one year. As with all antibodies care should be taken to avoid repeated freeze thaw cycles. Antibodies should not be exposed to prolonged high temperatures.
<b>Note</b>	For research use only
<b>Application notes</b>	XAF-1 antibody can be used for the detection of XAF-1 by Western blot at 0.5 - 1 µg/mL. Multiple isoforms of XAF-1 exist and a doublet at ~30 kDa can be seen using anti-XAF-1 (IN). For immunofluorescence start at 20 µg/mL. Antibody validated: Western Blot in human samples and Immunofluorescence in human samples. All other applications and species not yet tested.
<b>Isotype</b>	IgG
<b>Clonality</b>	Polyclonal
<b>MW</b>	Predicted: 31, 33 kDa Observed: 31 kDa
<b>Uniprot ID</b>	<a href="#">Q6GPH4</a>
<b>NCBI</b>	<a href="#">CAA68030</a>
<b>Dilution Range</b>	XAF-1 antibody can be used for the detection of XAF-1 by Western blot at 0.5 - 1 µg/mL. Multiple isoforms of XAF-1 exist and a doublet at ~30 kDa can be seen using anti-XAF-1 (IN). For immunofluorescence start at 20 µg/mL. Antibody validated: Western Blot in human samples and Immunofluorescence in human samples.



Western blot analysis of XAF-1 in human ...



Immunofluorescence of XAF-1 in Human Spl...