

---

## Product Datasheet

### XAF1 Antibody (orb1238583)

**Description**

XAF1 Antibody

**Species/Host**

Rabbit

**Reactivity**

Human, Mouse

**Conjugation**

Unconjugated

**Tested Applications**

ELISA, IF, IHC-P, WB

**Immunogen**

XAF-1 antibody was raised against a synthetic peptide corresponding to amino acids at the C-terminus of human XAF-1. The immunogen is located within the last 50 amino acids of XAF-1.

**Target**

XAF1

**Preservatives**

XAF-1 Antibody is supplied in PBS containing 0.02% sodium azide.

**Form/Appearance**

Liquid

**Concentration**

1 mg/mL

**Storage**

XAF-1 antibody can be stored at 4°C for three months and -20°C, stable for up to one year. As with all antibodies care should be taken to avoid repeated freeze thaw cycles. Antibodies should not be exposed to prolonged high temperatures.

**Note**

For research use only

**Application notes**

XAF-1 antibody can be used for the detection of XAF-1 by Western blot at 0.5 to 2 µg/mL. Antibody can also be used for immunohistochemistry starting at 2 µg/mL. For immunofluorescence start at 10 µg/mL. Antibody validated: Western Blot in human samples; Immunohistochemistry in human samples and Immunofluorescence in human samples. All other applications and species not yet tested.

**Isotype**

IgG

**Clonality**

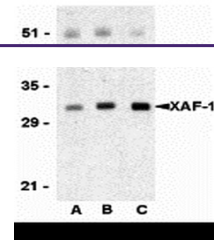
Polyclonal

**MW**

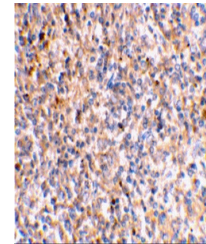
Predicted: 35 kDa Observed: 32 kDa

**Uniprot ID**
[Q6GPH4](#)
**NCBI**
[CAA68030](#)
**Dilution Range**

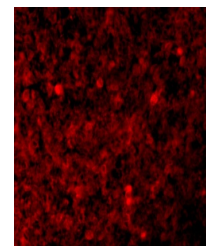
XAF-1 antibody can be used for the detection of XAF-1 by Western blot at 0.5 to 2 µg/mL. Antibody can also be used for immunohistochemistry starting at 2 µg/mL. For immunofluorescence start at 10 µg/mL. Antibody validated: Western Blot in human



Western blot analysis of XAF-1 in human ...



Immunohistochemical staining of human Sp...



Immunofluorescence of XAF-1 in Human Spl...