
Product Datasheet

YBX2 Antibody (orb1238575)

Description

YBX2 Antibody

Species/Host

Rabbit

Reactivity

Human, Mouse, Rat

Conjugation

Unconjugated

Tested Applications

ELISA, IF, IHC-P, WB

Immunogen

YBX2 antibody was raised against an 18 amino acid synthetic peptide near the carboxy end of human YBX2. The immunogen is located within amino acids 300 - 350 of YBX2.

Target

YBX2

Preservatives

YBX2 Antibody is supplied in PBS containing 0.02% sodium azide.

Form/Appearance

Liquid

Concentration

1 mg/mL

Storage

YBX2 antibody can be stored at 4°C for three months and -20°C, stable for up to one year. As with all antibodies care should be taken to avoid repeated freeze thaw cycles. Antibodies should not be exposed to prolonged high temperatures.

Note

For research use only

Application notes

YBX2 antibody can be used for detection of YBX2 by Western blot at 1 - 2 µg/mL. Antibody can also be used for immunohistochemistry starting at 10 µg/mL. For immunofluorescence start at 20 µg/mL. Antibody validated: Western Blot in human samples; Immunohistochemistry in human samples and Immunofluorescence in human samples. All other applications and species not yet tested.

Isotype

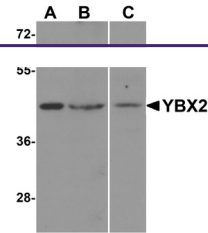
IgG

Clonality

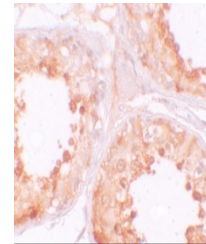
Polyclonal

Uniprot ID
[Q9Y2T7](#)
NCBI
[NP_057066](#)
Dilution Range

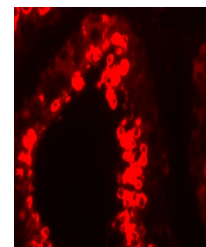
YBX2 antibody can be used for detection of YBX2 by Western blot at 1 - 2 µg/mL. Antibody can also be used for immunohistochemistry starting at 10 µg/mL. For immunofluorescence start at 20 µg/mL. Antibody validated: Western Blot in human samples; Immunohistochemistry in human samples and



Western blot analysis of YBX2 in human t...



Immunohistochemistry of YBX2 in human te...



Immunofluorescence of YBX2 in human test...