
Product Datasheet

ZBED2 Antibody (orb1238569)

Description

ZBED2 Antibody

Species/Host

Rabbit

Reactivity

Human

Conjugation

Unconjugated

Tested Applications

ELISA, ICC, WB

Immunogen

ZBED2 antibody was raised against a 15 amino acid synthetic peptide from near the amino terminus of human ZBED2. The immunogen is located within the first 50 amino acids of ZBED2.

Target

ZBED2

Preservatives

ZBED2 Antibody is supplied in PBS containing 0.02% sodium azide.

Form/Appearance

Liquid

Concentration

1 mg/mL

Storage

ZBED2 antibody can be stored at 4°C for three months and -20°C, stable for up to one year. As with all antibodies care should be taken to avoid repeated freeze thaw cycles. Antibodies should not be exposed to prolonged high temperatures.

Note

For research use only

Application notes

ZBED2 antibody can be used for detection of ZBED2 by Western blot at 1 - 2 µg/mL. Antibody can also be used for immunocytochemistry starting at 5 µg/mL. Antibody validated: Western Blot in human samples and Immunocytochemistry in human samples. All other applications and species not yet tested.

Isotype

IgG

Clonality

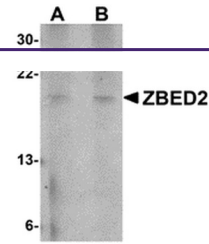
Polyclonal

Uniprot ID
[Q9BTP6](#)
NCBI
[NP_078784](#)
Dilution Range

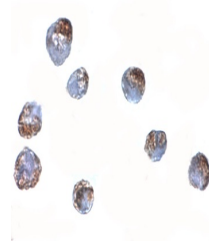
ZBED2 antibody can be used for detection of ZBED2 by Western blot at 1 - 2 µg/mL. Antibody can also be used for immunocytochemistry starting at 5 µg/mL. Antibody validated: Western Blot in human samples and Immunocytochemistry in human samples. All other applications and species not yet tested.

Expiration Date

12 months from date of receipt.



Western blot analysis of ZBED2 in A549 c...



Immunocytochemistry of ZBED2 in A549 cel...