

---

## Product Datasheet

### ZBTB1 Antibody (orb1238567)

**Description**

ZBTB1 Antibody

**Species/Host**

Rabbit

**Reactivity**

Human, Mouse, Rat

**Conjugation**

Unconjugated

**Tested**

ELISA, IHC-P, WB

**Applications**
**Immunogen**

ZBTB1 antibody was raised against a 14 amino acid synthetic peptide near the center of human ZBTB1. The immunogen is located within amino acids 260 - 310 of ZBTB1.

**Target**

ZBTB1

**Preservatives**

ZBTB1 Antibody is supplied in PBS containing 0.02% sodium azide.

**Form/Appearance**

Liquid

**Concentration**

1 mg/mL

**Storage**

ZBTB1 antibody can be stored at 4°C for three months and -20°C, stable for up to one year. As with all antibodies care should be taken to avoid repeated freeze thaw cycles. Antibodies should not be exposed to prolonged high temperatures.

**Note**

For research use only

**Application notes**

ZBTB1 antibody can be used for detection of ZBTB1 by Western blot at 1 - 2 µg/mL. Antibody can also be used for immunohistochemistry starting at 2.5 µg/mL. Antibody validated: Western Blot in human samples and Immunohistochemistry in mouse samples. All other applications and species not yet tested.

**Isotype**

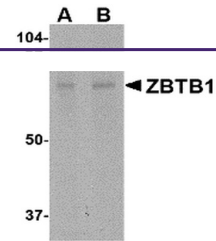
IgG

**Clonality**

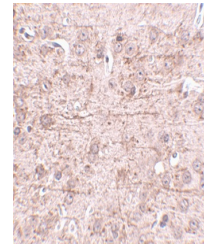
Polyclonal

**Uniprot ID**
[Q9Y2K1](#)
**NCBI**
[AAH50719](#)
**Dilution Range**

ZBTB1 antibody can be used for detection of ZBTB1 by Western blot at 1 - 2 µg/mL. Antibody can also be used for immunohistochemistry starting at 2.5 µg/mL. Antibody validated: Western Blot in human samples and Immunohistochemistry in mouse samples. All other applications and species not yet tested.



Western blot analysis of ZBTB1 in HepG2 ...



Immunohistochemistry of ZBTB1 in mouse b...