
Product Datasheet

ZBTB3 Antibody (orb1238566)

Description

ZBTB3 Antibody

Species/Host

Rabbit

Reactivity

Human, Mouse, Rat

Conjugation

Unconjugated

Tested Applications

ELISA, IF, IHC-P, WB

Immunogen

ZBTB3 antibody was raised against a 17 amino acid synthetic peptide near the carboxy terminus of human ZBTB3. The immunogen is located within amino acids 510 - 560 of ZBTB3.

Target

ZBTB3

Preservatives

ZBTB3 Antibody is supplied in PBS containing 0.02% sodium azide.

Form/Appearance

Liquid

Concentration

1 mg/mL

Storage

ZBTB3 antibody can be stored at 4°C for three months and -20°C, stable for up to one year. As with all antibodies care should be taken to avoid repeated freeze thaw cycles. Antibodies should not be exposed to prolonged high temperatures.

Note

For research use only

Application notes

ZBTB3 antibody can be used for detection of ZBTB3 by Western blot at 1 - 2 µg/mL. Antibody can also be used for immunohistochemistry starting at 2.5 µg/mL. For immunofluorescence start at 20 µg/mL. Antibody validated: Western Blot in rat samples; Immunohistochemistry in human samples and Immunofluorescence in human samples. All other applications and species not yet tested.

Isotype

IgG

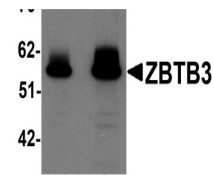
Clonality

Polyclonal

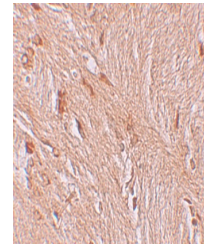
Uniprot ID
[Q9H5J0](#)
NCBI
[AAH25249](#)
Dilution Range

ZBTB3 antibody can be used for detection of ZBTB3 by Western blot at 1 - 2 µg/mL. Antibody can also be used for immunohistochemistry starting at 2.5 µg/mL. For immunofluorescence start at 20 µg/mL. Antibody validated: Western Blot in rat samples; Immunohistochemistry in human samples

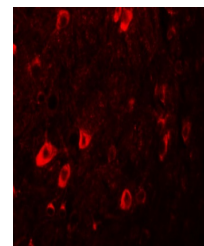
A B



Western blot analysis of ZBTB3 in rat br...



Immunohistochemistry of ZBTB3 in human b...



Immunofluorescence of ZBTB3 in human bra...