

---

## Product Datasheet

### ZBTB4 Antibody (orb1238564)

**Description**

ZBTB4 Antibody

**Species/Host**

Rabbit

**Reactivity**

Human, Mouse

**Conjugation**

Unconjugated

**Tested**

ELISA, IF, IHC-P, WB

**Applications**
**Immunogen**

ZBTB4 antibody was raised against a 18 amino acid synthetic peptide near the carboxy terminus of human ZBTB4. The immunogen is located within amino acids 790 - 840 of ZBTB4.

**Target**

ZBTB4

**Preservatives**

ZBTB4 Antibody is supplied in PBS containing 0.02% sodium azide.

**Form/Appearance**

Liquid

**Concentration**

1 mg/mL

**Storage**

ZBTB4 antibody can be stored at 4°C for three months and -20°C, stable for up to one year. As with all antibodies care should be taken to avoid repeated freeze thaw cycles. Antibodies should not be exposed to prolonged high temperatures.

**Note**

For research use only

**Application notes**

ZBTB4 antibody can be used for detection of ZBTB4 by Western blot at 1 µg/mL. Antibody can also be used for immunohistochemistry starting at 2.5 µg/mL. For immunofluorescence start at 20 µg/mL. Antibody validated: Western Blot in human samples; Immunohistochemistry in human samples and Immunofluorescence in human samples. All other applications and species not yet tested.

**Isotype**

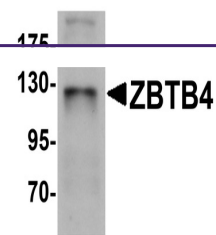
IgG

**Clonality**

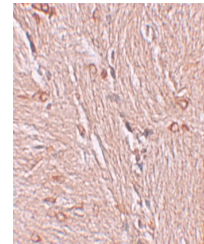
Polyclonal

**Uniprot ID**
[Q9P1Z0](#)
**NCBI**
[EAW90185](#)
**Dilution Range**

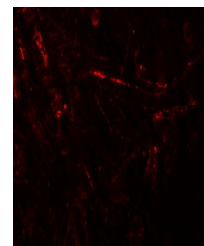
ZBTB4 antibody can be used for detection of ZBTB4 by Western blot at 1 µg/mL. Antibody can also be used for immunohistochemistry starting at 2.5 µg/mL. For immunofluorescence start at 20 µg/mL. Antibody validated: Western Blot in human samples; Immunohistochemistry in human samples



Western blot analysis of ZBTB4 in SK-N-S...



Immunohistochemistry of ZBTB4 in human brain tissue



Immunofluorescence of ZBTB4 in human brain tissue