

---

## Product Datasheet

### ZBTB7A Antibody (orb1238561)

**Description**

ZBTB7A Antibody

**Species/Host**

Rabbit

**Reactivity**

Human, Mouse

**Conjugation**

Unconjugated

**Tested**

ELISA, IF, IHC-P, WB

**Applications**
**Immunogen**

ZBTB7A antibody was raised against a 16 amino acid synthetic peptide near the amino terminus of human ZBTB7A. The immunogen is located within the first 50 amino acids of ZBTB7A.

**Target**

ZBTB7A

**Preservatives**

ZBTB7A Antibody is supplied in PBS containing 0.02% sodium azide.

**Form/Appearance**

Liquid

**Concentration**

1 mg/mL

**Storage**

ZBTB7A antibody can be stored at 4°C for three months and -20°C, stable for up to one year. As with all antibodies care should be taken to avoid repeated freeze thaw cycles. Antibodies should not be exposed to prolonged high temperatures.

**Note**

For research use only

**Application notes**

ZBTB7A antibody can be used for detection of ZBTB7A by Western blot at 1 - 2 µg/mL. Antibody can also be used for immunohistochemistry starting at 2.5 µg/mL. For immunofluorescence start at 20 µg/mL. Antibody validated: Western Blot in human samples; Immunohistochemistry in human samples and Immunofluorescence in human samples. All other applications and species not yet tested.

**Isotype**

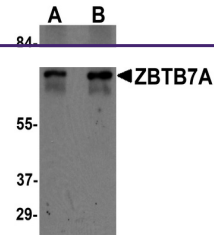
IgG

**Clonality**

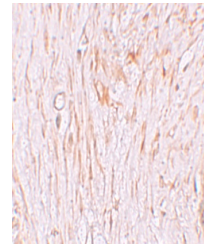
Polyclonal

**Uniprot ID**
[O95365](#)
**NCBI**
[AAH84568](#)
**Dilution Range**

ZBTB7A antibody can be used for detection of ZBTB7A by Western blot at 1 - 2 µg/mL. Antibody can also be used for immunohistochemistry starting at 2.5 µg/mL. For immunofluorescence start at 20 µg/mL. Antibody validated: Western Blot in human samples; Immunohistochemistry in human samples

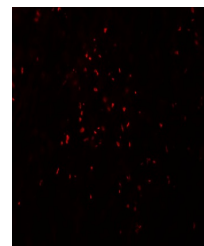


Western blot analysis of ZBTB7A in human...



Immunohistochemistry of ZBTB7A in human

...



Immunofluorescence of ZBTB7A in human ov...