
Product Datasheet

ZBTB8A Antibody (orb1238560)

Description

ZBTB8A Antibody

Species/Host

Rabbit

Reactivity

Human, Mouse

Conjugation

Unconjugated

Tested Applications

ELISA, IF, IHC-P, WB

Immunogen

ZBTB8 antibody was raised against a 17 amino acid synthetic peptide near the carboxy terminus of human ZBTB8. The immunogen is located within the last 50 amino acids of ZBTB8.

Target

ZBTB8A

Preservatives

ZBTB8 Antibody is supplied in PBS containing 0.02% sodium azide.

Form/Appearance

Liquid

Concentration

1 mg/mL

Storage

ZBTB8 antibody can be stored at 4°C for three months and -20°C, stable for up to one year. As with all antibodies care should be taken to avoid repeated freeze thaw cycles. Antibodies should not be exposed to prolonged high temperatures.

Note

For research use only

Application notes

ZBTB8 antibody can be used for detection of ZBTB8 by Western blot at 1 µg/mL. Antibody can also be used for immunohistochemistry starting at 2.5 µg/mL. For immunofluorescence start at 5 µg/mL. Antibody validated: Western Blot in mouse samples; Immunohistochemistry in human samples and Immunofluorescence in human samples. All other applications and species not yet tested.

Isotype

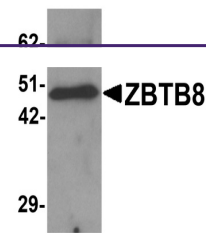
IgG

Clonality

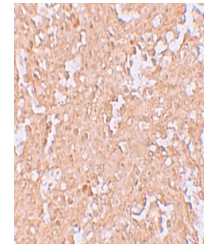
Polyclonal

Uniprot ID
[Q96BR9](#)
NCBI
[CAI20024](#)
Dilution Range

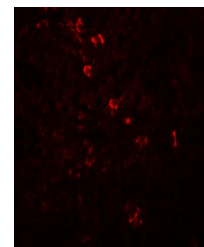
ZBTB8 antibody can be used for detection of ZBTB8 by Western blot at 1 µg/mL. Antibody can also be used for immunohistochemistry starting at 2.5 µg/mL. For immunofluorescence start at 5 µg/mL. Antibody validated: Western Blot in mouse samples; Immunohistochemistry in human samples



Western blot analysis of ZBTB8 in mouse ...



Immunohistochemistry of ZBTB8 in human s...



Immunofluorescence of ZBTB8 in human sple...