
Product Datasheet

ZBTB9 Antibody (orb1238559)

Description

ZBTB9 Antibody

Species/Host

Rabbit

Reactivity

Human, Mouse

Conjugation

Unconjugated

Tested

ELISA, IF, IHC-P, WB

Applications
Immunogen

ZBTB9 antibody was raised against a 15 amino acid synthetic peptide near the carboxy terminus of human ZBTB9. The immunogen is located within the first 50 amino acids of ZBTB9.

Target

ZBTB9

Preservatives

ZBTB9 Antibody is supplied in PBS containing 0.02% sodium azide.

Form/Appearance

Liquid

Concentration

1 mg/mL

Storage

ZBTB9 antibody can be stored at 4°C for three months and -20°C, stable for up to one year. As with all antibodies care should be taken to avoid repeated freeze thaw cycles. Antibodies should not be exposed to prolonged high temperatures.

Note

For research use only

Application notes

ZBTB9 antibody can be used for detection of ZBTB9 by Western blot at 1 µg/mL. Antibody can also be used for immunohistochemistry starting at 2.5 µg/mL. For immunofluorescence start at 5 µg/mL. Antibody validated: Western Blot in mouse samples; Immunohistochemistry in mouse samples and Immunofluorescence in mouse samples. All other applications and species not yet tested.

Isotype

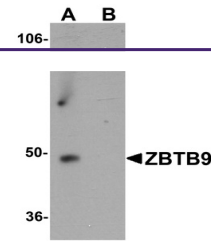
IgG

Clonality

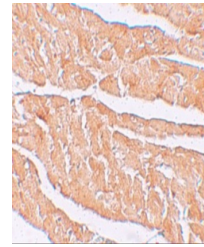
Polyclonal

Uniprot ID
[Q96C00](#)
NCBI
[NP_689948](#)
Dilution Range

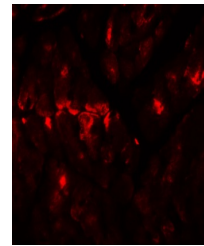
ZBTB9 antibody can be used for detection of ZBTB9 by Western blot at 1 µg/mL. Antibody can also be used for immunohistochemistry starting at 2.5 µg/mL. For immunofluorescence start at 5 µg/mL. Antibody validated: Western Blot in mouse samples; Immunohistochemistry in mouse samples



Western blot analysis of ZBTB9 in mouse ...



Immunohistochemistry of ZBTB9 in mouse h...



Immunofluorescence of ZBTB9 in mouse hea...