
Product Datasheet

ZC3H12B Antibody (orb1238558)

Description

ZC3H12B Antibody

Species/Host

Rabbit

Reactivity

Human, Mouse, Rat

Conjugation

Unconjugated

Tested Applications

ELISA, IHC-P, WB

Immunogen

ZC3H12B antibody was raised against a 17 amino acid synthetic peptide near the amino terminus of human ZC3H12B. The immunogen is located within the first 50 amino acids of ZC3H12B.

Target

ZC3H12B

Preservatives

ZC3H12B Antibody is supplied in PBS containing 0.02% sodium azide.

Form/Appearance

Liquid

Concentration

1 mg/mL

Storage

ZC3H12B antibody can be stored at 4°C for three months and -20°C, stable for up to one year. As with all antibodies care should be taken to avoid repeated freeze thaw cycles. Antibodies should not be exposed to prolonged high temperatures.

Note

For research use only

Application notes

ZC3H12B antibody can be used for detection of ZC3H12B by Western blot at 1 µg/mL. Antibody can also be used for immunohistochemistry starting at 5 µg/mL. Antibody validated: Western Blot in mouse samples and Immunohistochemistry in human samples. All other applications and species not yet tested.

Isotype

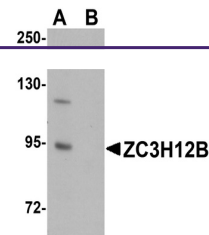
IgG

Clonality

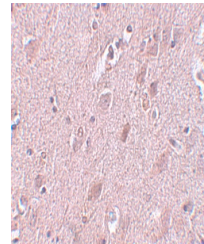
Polyclonal

Uniprot ID
[Q5HYM0](#)
NCBI
[NP_001010888](#)
Dilution Range

ZC3H12B antibody can be used for detection of ZC3H12B by Western blot at 1 µg/mL. Antibody can also be used for immunohistochemistry starting at 5 µg/mL. Antibody validated: Western Blot in mouse samples and Immunohistochemistry in human samples. All other applications and species not yet tested.



Western blot analysis of ZC3H12B in mouse...



Immunohistochemistry of ZC3H12B in human...