
Product Datasheet

ZC3H12C Antibody (orb1238557)

Description

ZC3H12C Antibody

Species/Host

Rabbit

Reactivity

Human, Mouse, Rat

Conjugation

Unconjugated

Tested Applications

ELISA, IF, IHC-P, WB

Immunogen

ZC3H12C antibody was raised against a 17 amino acid synthetic peptide near the amino terminus of human ZC3H12C. The immunogen is located within the first 50 amino acids of ZC3H12C.

Target

ZC3H12C

Preservatives

ZC3H12C Antibody is supplied in PBS containing 0.02% sodium azide.

Form/Appearance

Liquid

Concentration

1 mg/mL

Storage

ZC3H12C antibody can be stored at 4°C for three months and -20°C, stable for up to one year. As with all antibodies care should be taken to avoid repeated freeze thaw cycles. Antibodies should not be exposed to prolonged high temperatures.

Note

For research use only

Application notes

ZC3H12C antibody can be used for detection of ZC3H12C by Western blot at 1 µg/mL. Antibody can also be used for immunohistochemistry starting at 5 µg/mL. For immunofluorescence start at 20 µg/mL. Antibody validated: Western Blot in rat samples; Immunohistochemistry in human samples and Immunofluorescence in human samples. All other applications and species not yet tested.

Isotype

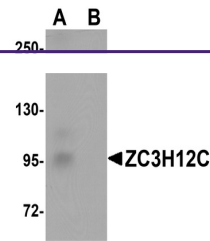
IgG

Clonality

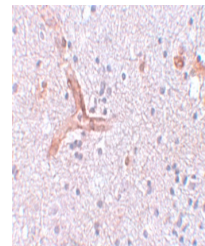
Polyclonal

Uniprot ID
[Q9C0D7](#)
NCBI
[NP_203748](#)
Dilution Range

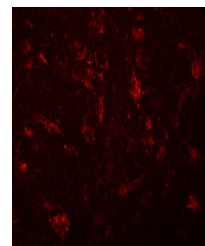
ZC3H12C antibody can be used for detection of ZC3H12C by Western blot at 1 µg/mL. Antibody can also be used for immunohistochemistry starting at 5 µg/mL. For immunofluorescence start at 20 µg/mL. Antibody validated: Western Blot in rat samples; Immunohistochemistry in human samples



Western blot analysis of ZC3H12C in rat ...



Immunohistochemistry of ZC3H12C in human...



Immunofluorescence of ZC3H12C in human b...