

Product Datasheet

ZC3HAV1 Antibody (orb1238556)

Description

ZC3HAV1 Antibody

Species/Host

Rabbit

Reactivity

Human

Conjugation

Unconjugated

Tested

ELISA, ICC, IF, WB

Applications
Immunogen

ZC3HAV1 antibody was raised against a 14 amino acid synthetic peptide near the carboxy terminus of human ZC3HAV1. The immunogen is located within amino acids 680 - 730 of ZC3HAV1.

Target

ZC3HAV1

Preservatives

ZC3HAV1 Antibody is supplied in PBS containing 0.02% sodium azide.

Form/Appearance

Liquid

Concentration

1 mg/mL

Storage

ZC3HAV1 antibody can be stored at 4°C for three months and -20°C, stable for up to one year. As with all antibodies care should be taken to avoid repeated freeze thaw cycles. Antibodies should not be exposed to prolonged high temperatures.

Note

For research use only

Application notes

ZC3HAV1 antibody can be used for detection of ZC3HAV1 by Western blot at 1 µg/mL. Antibody can also be used for immunocytochemistry starting at 20 µg/mL. For immunofluorescence start at 20 µg/mL. Antibody validated: Western Blot in human samples; Immunocytochemistry in human samples and Immunofluorescence in human samples. All other applications and species not yet tested.

Isotype

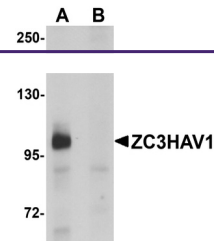
IgG

Clonality

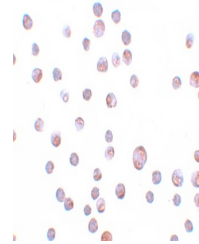
Polyclonal

Uniprot ID
[Q7Z2W4](#)
NCBI
[NP_078901](#)
Dilution Range

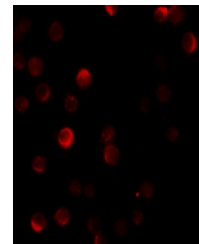
ZC3HAV1 antibody can be used for detection of ZC3HAV1 by Western blot at 1 µg/mL. Antibody can also be used for immunocytochemistry starting at 20 µg/mL. For immunofluorescence start at 20 µg/mL. Antibody validated: Western Blot in human samples; Immunocytochemistry in human samples



Western blot analysis of ZC3HAV1 in HeLa...



Immunocytochemistry of ZC3HAV1 in HeLa C...



Immunofluorescence of ZC3HAV1 in HeLa ce...