
Product Datasheet

VPS39 Antibody (orb1238555)

Description

VPS39 Antibody

Species/Host

Rabbit

Reactivity

Human, Mouse, Rat

Conjugation

Unconjugated

Tested

ELISA, IF, IHC-P, WB

Applications
Immunogen

VPS39 antibody was raised against a 18 amino acid synthetic peptide near the carboxy terminus of human VPS39. The immunogen is located within amino acids 710 - 760 of VPS39.

Target

VPS39

Preservatives

VPS39 Antibody is supplied in PBS containing 0.02% sodium azide.

Form/Appearance

Liquid

Concentration

1 mg/mL

Storage

VPS39 antibody can be stored at 4°C for three months and -20°C, stable for up to one year. As with all antibodies care should be taken to avoid repeated freeze thaw cycles. Antibodies should not be exposed to prolonged high temperatures.

Note

For research use only

Application notes

VPS39 antibody can be used for detection of VPS39 by Western blot at 0.5 µg/mL. Antibody can also be used for immunohistochemistry starting at 5 µg/mL. For immunofluorescence start at 5 µg/mL. Antibody validated: Western Blot in rat samples; Immunohistochemistry in mouse samples and Immunofluorescence in human and mouse samples. All other applications and species not yet tested.

Isotype

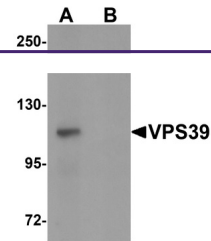
IgG

Clonality

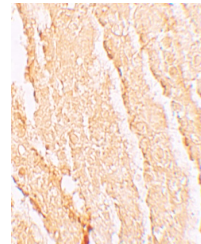
Polyclonal

Uniprot ID
[Q96JC1](#)
NCBI
[AAQ05978](#)
Dilution Range

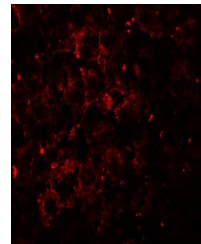
VPS39 antibody can be used for detection of VPS39 by Western blot at 0.5 µg/mL. Antibody can also be used for immunohistochemistry starting at 5 µg/mL. For immunofluorescence start at 5 µg/mL. Antibody validated: Western Blot in rat samples; Immunohistochemistry in mouse samples and



Western blot analysis of VPS39 in rat li...



Immunohistochemistry of VPS39 in mouse l...



Immunofluorescence of VPS39 in mouse liv...