

---

## Product Datasheet

### ZMIZ1 Antibody (orb1238547)

**Description**

ZMIZ1 Antibody

**Species/Host**

Rabbit

**Reactivity**

Human

**Conjugation**

Unconjugated

**Tested**

ELISA, ICC, IF, WB

**Applications**
**Immunogen**

ZIMP10 antibody was raised against a 15 amino acid synthetic peptide near the amino terminus of human ZIMP10. The immunogen is located within amino acids 90 - 140 of ZIMP10.

**Target**

ZMIZ1

**Preservatives**

ZIMP10 Antibody is supplied in PBS containing 0.02% sodium azide.

**Form/Appearance**

Liquid

**Concentration**

1 mg/mL

**Storage**

ZIMP10 antibody can be stored at 4°C for three months and -20°C, stable for up to one year. As with all antibodies care should be taken to avoid repeated freeze thaw cycles. Antibodies should not be exposed to prolonged high temperatures.

**Note**

For research use only

**Application notes**

ZIMP10 antibody can be used for detection of ZIMP10 by Western blot at 0.5 µg/mL. Antibody can also be used for immunocytochemistry starting at 10 µg/mL. For immunofluorescence start at 20 µg/mL. Antibody validated: Western Blot in human samples; Immunocytochemistry in human samples and Immunofluorescence in human samples. All other applications and species not yet tested.

**Isotype**

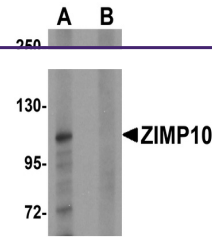
IgG

**Clonality**

Polyclonal

**Uniprot ID**
[Q9ULJ6](#)
**NCBI**
[NP\\_65071](#)
**Dilution Range**

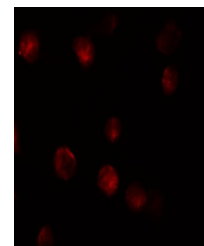
ZIMP10 antibody can be used for detection of ZIMP10 by Western blot at 0.5 µg/mL. Antibody can also be used for immunocytochemistry starting at 10 µg/mL. For immunofluorescence start at 20 µg/mL. Antibody validated: Western Blot in human samples; Immunocytochemistry in human samples and



Western blot analysis of ZIMP10 in K562 ...



Immunocytochemistry of ZIMP10 in K562 ce...



Immunofluorescence of ZIMP10 in K562 cel...