

---

## Product Datasheet

### Slc39a10 Antibody (orb1238546)

**Description**

Slc39a10 Antibody

**Species/Host**

Rabbit

**Reactivity**

Human, Mouse, Rat

**Conjugation**

Unconjugated

**Tested Applications**

ELISA, IHC-P, WB

**Immunogen**

ZIP10 antibody was raised against a 17 amino acid synthetic peptide near the center of the human ZIP10. The immunogen is located within amino acids 490 - 540 of ZIP10.

**Target**

Slc39a10

**Preservatives**

ZIP10 Antibody is supplied in PBS containing 0.02% sodium azide.

**Form/Appearance**

Liquid

**Concentration**

1 mg/mL

**Storage**

ZIP10 antibody can be stored at 4°C for three months and -20°C, stable for up to one year. As with all antibodies care should be taken to avoid repeated freeze thaw cycles. Antibodies should not be exposed to prolonged high temperatures.

**Note**

For research use only

**Application notes**

ZIP10 antibody can be used for detection of ZIP10 by Western blot at 1 - 2 µg/mL. Antibody can also be used for immunohistochemistry starting at 2.5 µg/mL. Antibody validated: Western Blot in human samples and Immunohistochemistry in human samples. All other applications and species not yet tested.

**Isotype**

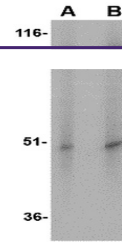
IgG

**Clonality**

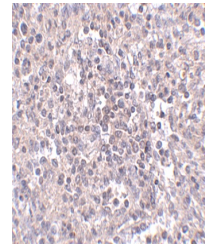
Polyclonal

**Uniprot ID**
[Q9ULF5](#)
**NCBI**
[EAW70116](#)
**Dilution Range**

ZIP10 antibody can be used for detection of ZIP10 by Western blot at 1 - 2 µg/mL. Antibody can also be used for immunohistochemistry starting at 2.5 µg/mL. Antibody validated: Western Blot in human samples and Immunohistochemistry in human samples. All other applications and species not yet tested.



Western blot analysis of ZIP10 in human ...



Immunohistochemistry of ZIP10 in human s...