

---

## Product Datasheet

### SLC39A11 Antibody (orb1238544)

**Description**

SLC39A11 Antibody

**Species/Host**

Rabbit

**Reactivity**

Human, Mouse, Rat

**Conjugation**

Unconjugated

**Tested**

ELISA, IHC-P, WB

**Applications**
**Immunogen**

ZIP11 antibody was raised against a 15 amino acid synthetic peptide near the center of the human ZIP11. The immunogen is located within amino acids 130 - 180 of ZIP11.

**Target**

SLC39A11

**Preservatives**

ZIP11 Antibody is supplied in PBS containing 0.02% sodium azide.

**Form/Appearance**

Liquid

**Concentration**

1 mg/mL

**Storage**

ZIP11 antibody can be stored at 4°C for three months and -20°C, stable for up to one year. As with all antibodies care should be taken to avoid repeated freeze thaw cycles. Antibodies should not be exposed to prolonged high temperatures.

**Note**

For research use only

**Application notes**

ZIP11 antibody can be used for detection of ZIP11 by Western blot at 1 - 2 µg/mL. Antibody can also be used for immunohistochemistry starting at 2.5 µg/mL. Antibody validated: Western Blot in mouse samples and Immunohistochemistry in mouse samples. All other applications and species not yet tested.

**Isotype**

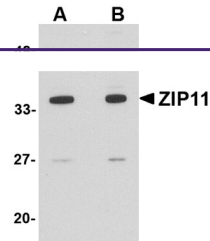
IgG

**Clonality**

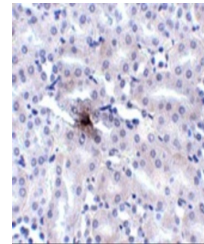
Polyclonal

**Uniprot ID**
[Q8N1S5](#)
**NCBI**
[EAW89107](#)
**Dilution Range**

ZIP11 antibody can be used for detection of ZIP11 by Western blot at 1 - 2 µg/mL. Antibody can also be used for immunohistochemistry starting at 2.5 µg/mL. Antibody validated: Western Blot in mouse samples and Immunohistochemistry in mouse samples. All other applications and species not yet tested.



Western blot analysis of ZIP11 in mouse ...



Immunohistochemistry of ZIP11 in mouse k...