
Product Datasheet

Slc39a12 Antibody (orb1238543)

Description

Slc39a12 Antibody

Species/Host

Rabbit

Reactivity

Human, Mouse

Conjugation

Unconjugated

Tested Applications

ELISA, IF, IHC-P, WB

Applications
Immunogen

ZIP12 antibody was raised against a 15 amino acid synthetic peptide near the amino terminus of human ZIP12. The immunogen is located within the first 50 amino acids of ZIP12.

Target

Slc39a12

Preservatives

ZIP12 Antibody is supplied in PBS containing 0.02% sodium azide.

Form/Appearance

Liquid

Concentration

1 mg/mL

Storage

ZIP12 antibody can be stored at 4°C for three months and -20°C, stable for up to one year. As with all antibodies care should be taken to avoid repeated freeze thaw cycles. Antibodies should not be exposed to prolonged high temperatures.

Note

For research use only

Application notes

ZIP12 antibody can be used for detection of ZIP12 by Western blot at 0.5 - 1 µg/mL. Antibody can also be used for immunohistochemistry starting at 2.5 µg/mL. For immunofluorescence start at 20 µg/mL. Antibody validated: Western Blot in human samples; Immunohistochemistry in mouse samples and Immunofluorescence in mouse samples. All other applications and species not yet tested.

Isotype

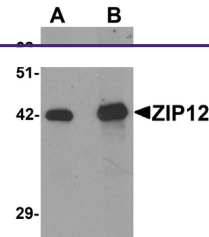
IgG

Clonality

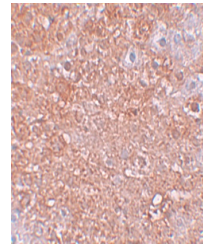
Polyclonal

Uniprot ID
[Q504Y0](#)
NCBI
[NP_001138667](#)
Dilution Range

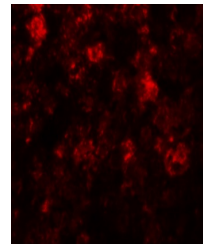
ZIP12 antibody can be used for detection of ZIP12 by Western blot at 0.5 - 1 µg/mL. Antibody can also be used for immunohistochemistry starting at 2.5 µg/mL. For immunofluorescence start at 20 µg/mL. Antibody validated: Western Blot in human samples; Immunohistochemistry in mouse samples



Western blot analysis of ZIP12 in HepG2 ...



Immunohistochemistry of ZIP12 in mouse l...



Immunofluorescence of ZIP12 in mouse liv...