
Product Datasheet

Slc39a13 Antibody (orb1238542)

Description

Slc39a13 Antibody

Species/Host

Rabbit

Reactivity

Human

Conjugation

Unconjugated

Tested

ELISA, IF, IHC-P

Applications
Immunogen

ZIP13 antibody was raised against a 14 amino acid synthetic peptide near the amino terminus of human ZIP13. The immunogen is located within amino acids 150 - 200 of ZIP13.

Target

Slc39a13

Preservatives

ZIP13 Antibody is supplied in PBS containing 0.02% sodium azide.

Form/Appearance

Liquid

Concentration

1 mg/mL

Storage

ZIP13 antibody can be stored at 4°C for three months and -20°C, stable for up to one year. As with all antibodies care should be taken to avoid repeated freeze thaw cycles. Antibodies should not be exposed to prolonged high temperatures.

Note

For research use only

Application notes

ZIP13 Antibody can be used for immunohistochemistry starting at 2.5 µg/mL. For immunofluorescence start at 20 µg/mL. Antibody validated: Immunohistochemistry in human samples and Immunofluorescence in human samples. All other applications and species not yet tested.

Isotype

IgG

Clonality

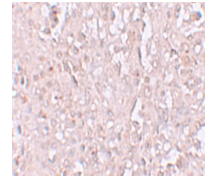
Polyclonal

Uniprot ID
[Q96H72](#)
NCBI
[NP_001121697](#)
Dilution Range

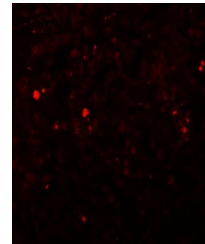
ZIP13 Antibody can be used for immunohistochemistry starting at 2.5 µg/mL. For immunofluorescence start at 20 µg/mL. Antibody validated: Immunohistochemistry in human samples and Immunofluorescence in human samples. All other applications and species not yet tested.

Expiration Date

12 months from date of receipt.



Immunohistochemistry of ZIP13 in human s...



Immunofluorescence of ZIP13 in human spl...