

---

## Product Datasheet

### Slc39a14 Antibody (orb1238541)

**Description**

Slc39a14 Antibody

**Species/Host**

Rabbit

**Reactivity**

Human, Mouse, Rat

**Conjugation**

Unconjugated

**Tested**

ELISA, IF, IHC-P, WB

**Applications**
**Immunogen**

ZIP14 antibody was raised against a 16 amino acid synthetic peptide near the center of human ZIP14. The immunogen is located within amino acids 230 - 280 of ZIP14.

**Target**

Slc39a14

**Preservatives**

ZIP14 Antibody is supplied in PBS containing 0.02% sodium azide.

**Form/Appearance**

Liquid

**Concentration**

1 mg/mL

**Storage**

ZIP14 antibody can be stored at 4°C for three months and -20°C, stable for up to one year. As with all antibodies care should be taken to avoid repeated freeze thaw cycles. Antibodies should not be exposed to prolonged high temperatures.

**Note**

For research use only

**Application notes**

ZIP14 antibody can be used for detection of ZIP14 by Western blot at 1 - 2 µg/mL. Antibody can also be used for immunohistochemistry starting at 2.5 µg/mL. For immunofluorescence start at 20 µg/mL. Antibody validated: Western Blot in human samples; Immunohistochemistry in mouse samples and Immunofluorescence in mouse samples. All other applications and species not yet tested.

**Isotype**

IgG

**Clonality**

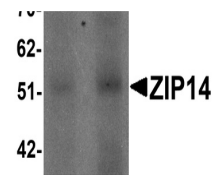
Polyclonal

**MW**

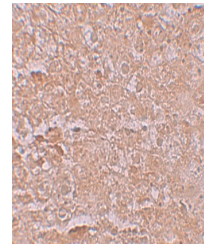
Predicted: 54 kDa Observed: 52 kDa

**Uniprot ID**
[Q15043](#)
**NCBI**
[NP\\_001128625](#)
**Dilution Range**

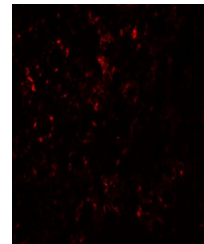
ZIP14 antibody can be used for detection of ZIP14 by Western blot at 1 - 2 µg/mL. Antibody can also be used for immunohistochemistry starting at 2.5 µg/mL. For immunofluorescence start at 20 µg/mL. Antibody validated: Western Blot in human

**A B**


Western blot analysis of ZIP14 in human ...



Immunohistochemistry of ZIP14 in mouse l...



Immunofluorescence of ZIP14 in Mouse Liv...