

---

## Product Datasheet

### SLC39A1 Antibody (orb1238540)

**Description**

SLC39A1 Antibody

**Species/Host**

Rabbit

**Reactivity**

Human, Mouse

**Conjugation**

Unconjugated

**Tested**

ELISA, IF, IHC-P, WB

**Applications**
**Immunogen**

ZIP1 antibody was raised against a 16 amino acid synthetic peptide near the amino terminus of human ZIP1. The immunogen is located within amino acids 40 - 90 of ZIP1.

**Target**

SLC39A1

**Preservatives**

ZIP1 Antibody is supplied in PBS containing 0.02% sodium azide.

**Form/Appearance**

Liquid

**Concentration**

1 mg/mL

**Storage**

ZIP1 antibody can be stored at 4°C for three months and -20°C, stable for up to one year. As with all antibodies care should be taken to avoid repeated freeze thaw cycles. Antibodies should not be exposed to prolonged high temperatures.

**Note**

For research use only

**Application notes**

ZIP1 antibody can be used for detection of ZIP1 by Western blot at 1 - 2 µg/mL. Antibody can also be used for immunohistochemistry starting at 2.5 µg/mL. For immunofluorescence start at 20 µg/mL. Antibody validated: Western Blot in mouse samples; Immunohistochemistry in human samples and Immunofluorescence in human samples. All other applications and species not yet tested.

**Isotype**

IgG

**Clonality**

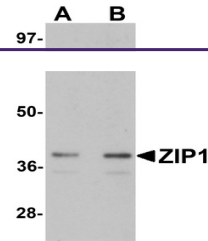
Polyclonal

**MW**

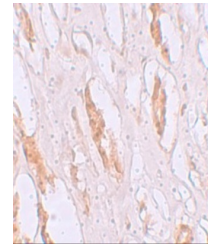
Predicted: 13, 36 kDa Observed: 38 kDa

**Uniprot ID**
[Q9NY26](#)
**NCBI**
[NP\\_055252](#)
**Dilution Range**

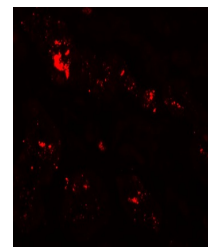
ZIP1 antibody can be used for detection of ZIP1 by Western blot at 1 - 2 µg/mL. Antibody can also be used for immunohistochemistry starting at 2.5 µg/mL. For immunofluorescence start at 20 µg/mL. Antibody validated: Western Blot in mouse



Western blot analysis of ZIP1 in mouse k...



Immunohistochemistry of ZIP1 in human ki...



Immunofluorescence of ZIP1 in human kidn...