

---

## Product Datasheet

### SLC39A2 Antibody (orb1238539)

**Description**

SLC39A2 Antibody

**Species/Host**

Rabbit

**Reactivity**

Human, Mouse, Rat

**Conjugation**

Unconjugated

**Tested Applications**

ELISA, IF, IHC-P, WB

**Immunogen**

ZIP2 antibody was raised against a 17 amino acid synthetic peptide near the amino terminus of human ZIP2. The immunogen is located within amino acids 70 - 120 of ZIP2.

**Target**

SLC39A2

**Preservatives**

ZIP2 Antibody is supplied in PBS containing 0.02% sodium azide.

**Form/Appearance**

Liquid

**Concentration**

1 mg/mL

**Storage**

ZIP2 antibody can be stored at 4°C for three months and -20°C, stable for up to one year. As with all antibodies care should be taken to avoid repeated freeze thaw cycles. Antibodies should not be exposed to prolonged high temperatures.

**Note**

For research use only

**Application notes**

ZIP2 antibody can be used for detection of ZIP2 by Western blot at 1 µg/mL. Antibody can also be used for immunohistochemistry starting at 2.5 µg/mL. For immunofluorescence start at 20 µg/mL. Antibody validated: Western Blot in mouse and rat samples; Immunohistochemistry in human samples and Immunofluorescence in human samples. All other applications and species not yet tested.

**Isotype**

IgG

**Clonality**

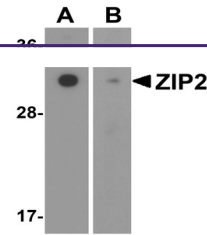
Polyclonal

**MW**

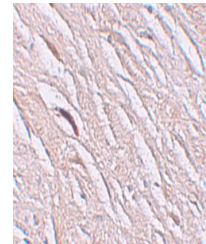
Predicted: 34kDa Observed: 32 kDa

**Uniprot ID**
[Q9NP94](#)
**NCBI**
[NP\\_055394](#)
**Dilution Range**

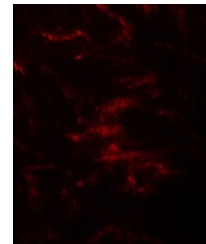
ZIP2 antibody can be used for detection of ZIP2 by Western blot at 1 µg/mL. Antibody can also be used for immunohistochemistry starting at 2.5 µg/mL. For immunofluorescence start at 20 µg/mL. Antibody validated: Western Blot in mouse and rat samples;



Western blot analysis of ZIP2 in (A) mou...



Immunohistochemistry of ZIP2 in human brai...



Immunofluorescence of ZIP2 in human brai...