
Product Datasheet

SLC39A5 Antibody (orb1238537)

Description

SLC39A5 Antibody

Species/Host

Rabbit

Reactivity

Human, Mouse

Conjugation

Unconjugated

Tested

ELISA, IF, IHC-P, WB

Applications
Immunogen

ZIP5 antibody was raised against a 17 amino acid synthetic peptide near the center of human ZIP5. The immunogen is located within amino acids 330 - 380 of ZIP5.

Target

SLC39A5

Preservatives

ZIP5 Antibody is supplied in PBS containing 0.02% sodium azide.

Form/Appearance

Liquid

Concentration

1 mg/mL

Storage

ZIP5 antibody can be stored at 4°C for three months and -20°C, stable for up to one year. As with all antibodies care should be taken to avoid repeated freeze thaw cycles. Antibodies should not be exposed to prolonged high temperatures.

Note

For research use only

Application notes

ZIP5 antibody can be used for detection of ZIP5 by Western blot at 1 - 2 µg/mL. Antibody can also be used for immunohistochemistry starting at 2.5 µg/mL. For immunofluorescence start at 20 µg/mL. Antibody validated: Western Blot in human samples; Immunohistochemistry in human samples and Immunofluorescence in human samples. All other applications and species not yet tested.

Isotype

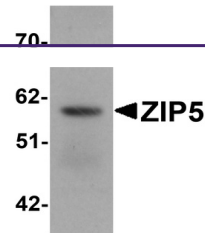
IgG

Clonality

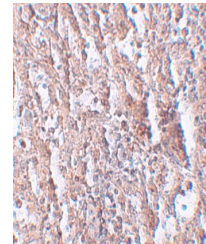
Polyclonal

Uniprot ID
[Q6ZMH5](#)
NCBI
[NP_001128667](#)
Dilution Range

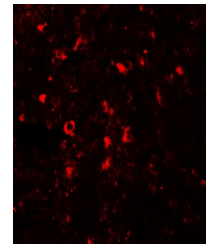
ZIP5 antibody can be used for detection of ZIP5 by Western blot at 1 - 2 µg/mL. Antibody can also be used for immunohistochemistry starting at 2.5 µg/mL. For immunofluorescence start at 20 µg/mL. Antibody validated: Western Blot in human samples; Immunohistochemistry in human samples



Western blot analysis of ZIP5 in human s...



Immunohistochemistry of ZIP5 in human sp...



Immunofluorescence of ZIP5 in human sple...