

---

## Product Datasheet

### SLC39A6 Antibody (orb1238536)

**Description**

SLC39A6 Antibody

**Species/Host**

Rabbit

**Reactivity**

Human, Mouse

**Conjugation**

Unconjugated

**Tested Applications**

ELISA, IF, IHC-P, WB

**Applications**
**Immunogen**

ZIP6 antibody was raised against a 16 amino acid synthetic peptide near the center of human ZIP6. The immunogen is located within amino acids 430 - 480 of ZIP6.

**Target**

SLC39A6

**Preservatives**

ZIP6 Antibody is supplied in PBS containing 0.02% sodium azide.

**Form/Appearance**

Liquid

**Concentration**

1 mg/mL

**Storage**

ZIP6 antibody can be stored at 4°C for three months and -20°C, stable for up to one year. As with all antibodies care should be taken to avoid repeated freeze thaw cycles. Antibodies should not be exposed to prolonged high temperatures.

**Note**

For research use only

**Application notes**

ZIP6 antibody can be used for detection of ZIP6 by Western blot at 1 µg/mL. Antibody can also be used for immunohistochemistry starting at 2.5 µg/mL. For immunofluorescence start at 20 µg/mL. Antibody validated: Western Blot in mouse samples; Immunohistochemistry in mouse samples and Immunofluorescence in mouse samples. All other applications and species not yet tested.

**Isotype**

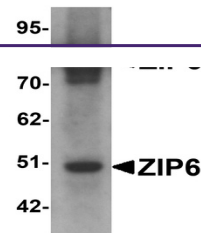
IgG

**Clonality**

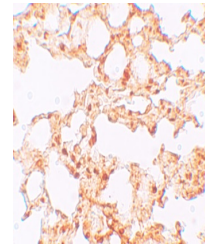
Polyclonal

**Uniprot ID**
[Q13433](#)
**NCBI**
[NP\\_001092876](#)
**Dilution Range**

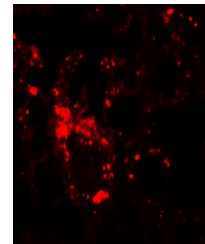
ZIP6 antibody can be used for detection of ZIP6 by Western blot at 1 µg/mL. Antibody can also be used for immunohistochemistry starting at 2.5 µg/mL. For immunofluorescence start at 20 µg/mL. Antibody validated: Western Blot in mouse samples; Immunohistochemistry in mouse samples and



Western blot analysis of ZIP6 in mouse l...



Immunohistochemistry of ZIP6 in mouse lu...



Immunofluorescence of ZIP6 in mouse lung...