
Product Datasheet

ZEB2 Antibody (orb1238535)

Description

ZEB2 Antibody

Species/Host

Rabbit

Reactivity

Human, Mouse, Rat

Conjugation

Unconjugated

Tested Applications

ELISA, ICC, IF, WB

Immunogen

ZEB2 antibody was raised against an 18 amino acid synthetic peptide near the carboxy terminus of human ZEB2. The immunogen is located within the last 50 amino acids of ZEB2.

Target

ZEB2

Preservatives

ZEB2 Antibody is supplied in PBS containing 0.02% sodium azide.

Form/Appearance

Liquid

Concentration

1 mg/mL

Storage

ZEB2 antibody can be stored at 4°C for three months and -20°C, stable for up to one year. As with all antibodies care should be taken to avoid repeated freeze thaw cycles. Antibodies should not be exposed to prolonged high temperatures.

Note

For research use only

Application notes

ZEB2 antibody can be used for detection of ZEB2 by Western blot at 1 - 2 µg/mL. Antibody can also be used for immunocytochemistry starting at 20 µg/mL. For immunofluorescence start at 20 µg/mL. Antibody validated: Western Blot in mouse samples; Immunocytochemistry in human samples and Immunofluorescence in human samples. All other applications and species not yet tested.

Isotype

IgG

Clonality

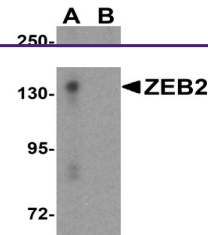
Polyclonal

MW

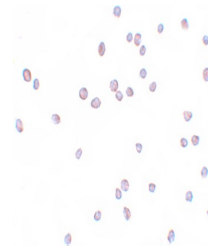
Predicted: 134 kDa Observed: 135 kDa

Uniprot ID
[O60315](#)
NCBI
[AAI27103](#)
Dilution Range

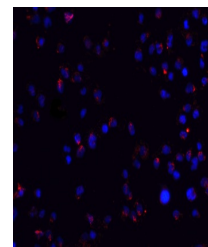
ZEB2 antibody can be used for detection of ZEB2 by Western blot at 1 - 2 µg/mL. Antibody can also be used for immunocytochemistry starting at 20 µg/mL. For immunofluorescence start at 20 µg/mL. Antibody validated: Western Blot in mouse samples;



Western blot analysis of ZEB2 in EL4 cel...



Immunocytochemistry of ZEB2 in Jurkat ce...



Immunofluorescence of ZEB2 in Jurkat cel...