

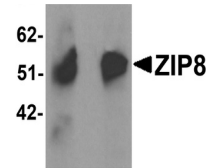
---

## Product Datasheet

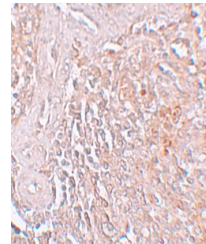
### Slc39a8 Antibody (orb1238534)

<b>Description</b>	Slc39a8 Antibody
<b>Species/Host</b>	Rabbit
<b>Reactivity</b>	Human
<b>Conjugation</b>	Unconjugated
<b>Tested Applications</b>	ELISA, IF, IHC-P, WB
<b>Immunogen</b>	ZIP8 antibody was raised against a 18 amino acid synthetic peptide near the carboxy terminus of human ZIP8. The immunogen is located within the last 50 amino acids of ZIP8.
<b>Target</b>	Slc39a8
<b>Preservatives</b>	ZIP8 Antibody is supplied in PBS containing 0.02% sodium azide.
<b>Form/Appearance</b>	Liquid
<b>Concentration</b>	1 mg/mL
<b>Storage</b>	ZIP8 antibody can be stored at 4°C for three months and -20°C, stable for up to one year. As with all antibodies care should be taken to avoid repeated freeze thaw cycles. Antibodies should not be exposed to prolonged high temperatures.
<b>Note</b>	For research use only
<b>Application notes</b>	ZIP8 antibody can be used for detection of ZIP8 by Western blot at 1 - 2 µg/mL. Antibody can also be used for immunohistochemistry starting at 5 µg/mL. For immunofluorescence start at 20 µg/mL. Antibody validated: Western Blot in human samples; Immunohistochemistry in human samples and Immunofluorescence in human samples. All other applications and species not yet tested.
<b>Isotype</b>	IgG
<b>Clonality</b>	Polyclonal
<b>Uniprot ID</b>	<a href="#">Q9C0K1</a>
<b>NCBI</b>	<a href="#">NP_071437</a>
<b>Dilution Range</b>	ZIP8 antibody can be used for detection of ZIP8 by Western blot at 1 - 2 µg/mL. Antibody can also be used for immunohistochemistry starting at 5 µg/mL. For immunofluorescence start at 20 µg/mL. Antibody validated: Western Blot in human samples; Immunohistochemistry in human samples and

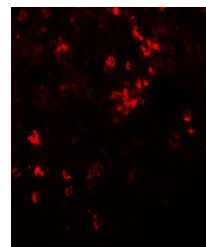
**A B**



Western blot analysis of ZIP8 in human s...



Immunohistochemistry of ZIP8 in human sple...



Immunofluorescence of ZIP8 in human sple...