
Product Datasheet

Slc39a9 Antibody (orb1238533)

Description

Slc39a9 Antibody

Species/Host

Rabbit

Reactivity

Human, Mouse

Conjugation

Unconjugated

Tested

ELISA, IF, IHC-P, WB

Applications
Immunogen

ZIP9 antibody was raised against a 18 amino acid synthetic peptide near the amino terminus of human ZIP9. The immunogen is located within amino acids 70 - 120 of ZIP9.

Target

Slc39a9

Preservatives

ZIP9 Antibody is supplied in PBS containing 0.02% sodium azide.

Form/Appearance

Liquid

Concentration

1 mg/mL

Storage

ZIP9 antibody can be stored at 4°C for three months and -20°C, stable for up to one year. As with all antibodies care should be taken to avoid repeated freeze thaw cycles. Antibodies should not be exposed to prolonged high temperatures.

Note

For research use only

Application notes

ZIP9 antibody can be used for detection of ZIP9 by Western blot at 1 - 2 µg/mL. Antibody can also be used for immunohistochemistry starting at 2.5 µg/mL. For immunofluorescence start at 20 µg/mL. Antibody validated: Western Blot in human samples; Immunohistochemistry in human samples and Immunofluorescence in human samples. All other applications and species not yet tested.

Isotype

IgG

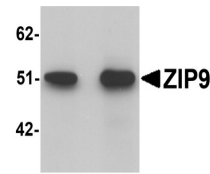
Clonality

Polyclonal

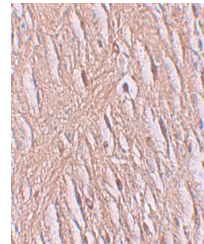
Uniprot ID
[Q9NUM3](#)
NCBI
[NP_060845](#)
Dilution Range

ZIP9 antibody can be used for detection of ZIP9 by Western blot at 1 - 2 µg/mL. Antibody can also be used for immunohistochemistry starting at 2.5 µg/mL. For immunofluorescence start at 20 µg/mL. Antibody validated: Western Blot in human samples; Immunohistochemistry in human samples

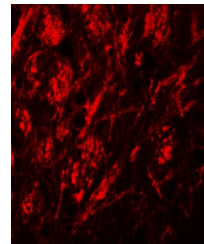
A B



Western blot analysis of ZIP9 in HepG2 c...



Immunohistochemistry of ZIP9 in human br...



Immunofluorescence of ZIP9 in human brai...