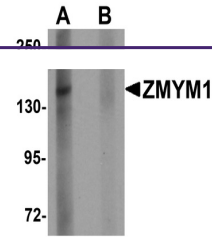
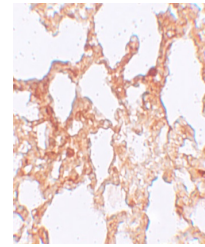

Product Datasheet

ZMYM1 Antibody (orb1238531)

Description	ZMYM1 Antibody
Species/Host	Rabbit
Reactivity	Human, Mouse, Rat
Conjugation	Unconjugated
Tested Applications	ELISA, IHC-P, WB
Immunogen	ZMYM1 antibody was raised against a 17 amino acid synthetic peptide near the carboxy terminus of human ZMYM1 .The immunogen is located within amino acids 990 - 1040 of ZMYM1.
Target	ZMYM1
Preservatives	ZMYM1 Antibody is supplied in PBS containing 0.02% sodium azide.
Form/Appearance	Liquid
Concentration	1 mg/mL
Storage	ZMYM1 antibody can be stored at 4°C for three months and -20°C, stable for up to one year. As with all antibodies care should be taken to avoid repeated freeze thaw cycles. Antibodies should not be exposed to prolonged high temperatures.
Note	For research use only
Application notes	ZMYM1 antibody can be used for detection of ZMYM1 by Western blot at 1 µg/mL. Antibody can also be used for immunohistochemistry starting at 5 µg/mL. Antibody validated: Western Blot in rat samples and Immunohistochemistry in rat samples. All other applications and species not yet tested.
Isotype	IgG
Clonality	Polyclonal
Uniprot ID	Q5SVZ6
NCBI	NP_079048
Dilution Range	ZMYM1 antibody can be used for detection of ZMYM1 by Western blot at 1 µg/mL. Antibody can also be used for immunohistochemistry starting at 5 µg/mL. Antibody validated: Western Blot in rat samples and Immunohistochemistry in rat samples. All other applications and species not yet tested.
Expiration Date	12 months from date of receipt.



Western blot analysis of ZMYM1 in rat lu...



Immunohistochemistry of ZMYM1 in rat lun...