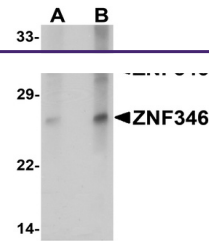
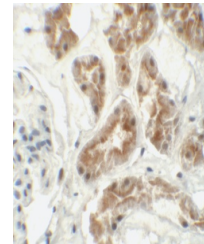

Product Datasheet

ZNF346 Antibody (orb1238528)

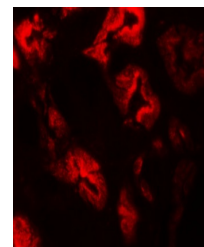
Description	ZNF346 Antibody
Species/Host	Rabbit
Reactivity	Human, Mouse
Conjugation	Unconjugated
Tested Applications	ELISA, IF, IHC-P, WB
Immunogen	ZNF346 antibody was raised against a 20 amino acid synthetic peptide near the carboxy terminus of human ZNF346. The immunogen is located within the last 50 amino acids of ZNF346.
Target	ZNF346
Preservatives	ZNF346 (CT) Antibody is supplied in PBS containing 0.02% sodium azide.
Form/Appearance	Liquid
Concentration	1 mg/mL
Storage	ZNF346 antibody can be stored at 4°C for three months and -20°C, stable for up to one year. As with all antibodies care should be taken to avoid repeated freeze thaw cycles. Antibodies should not be exposed to prolonged high temperatures.
Note	For research use only
Application notes	ZNF346 antibody can be used for detection of ZNF346 by Western blot at 1 - 2 µg/mL. Antibody can also be used for immunohistochemistry starting at 5 µg/mL. For immunofluorescence start at 20 µg/mL. Antibody validated: Western Blot in human samples; Immunohistochemistry in human samples and Immunofluorescence in human samples. All other applications and species not yet tested.
Isotype	IgG
Clonality	Polyclonal
Uniprot ID	Q9UL40
NCBI	NP_036411
Dilution Range	ZNF346 antibody can be used for detection of ZNF346 by Western blot at 1 - 2 µg/mL. Antibody can also be used for immunohistochemistry starting at 5 µg/mL. For immunofluorescence start at 20 µg/mL. Antibody validated: Western Blot in human samples; Immunohistochemistry in human samples



Western blot analysis of ZNF346 in human...



Immunohistochemistry of ZNF346 (CT) in h...



Immunofluorescence of ZNF346 in human ki...